

For Research Use Only

# CoraLite® Plus 647-conjugated PSMA7 Monoclonal antibody



Catalog Number:CL647-67817

## Basic Information

Catalog Number:

CL647-67817

Size:

1000 µg/ml

Source:

Mouse

Isotype:

IgG1

Immunogen Catalog Number:

AG7821

GenBank Accession Number:

BC004427

GeneID (NCBI):

5688

UNIPROT ID:

O14818

Full Name:

proteasome (prosome, macropain)  
subunit, alpha type, 7

Calculated MW:

28 kDa

Observed MW:

28-30 kDa

Purification Method:

Protein G purification

CloneNo.:

1F2C6

Excitation/Emission maxima  
wavelengths:

654 nm / 674 nm

## Applications

Tested Applications:

FC (Intra)

Species Specificity:

Human, mouse, rat

## Background Information

PSMA7(Proteasome subunit alpha type-7) is also named as HSPC and belongs to the peptidase T1A family. It is an  $\alpha$ -type subunit of the 20S proteasome core complex and participates in degrading proteins through ubiquitin-proteasome pathway (UPP) which plays an important role in the regulation of cell proliferation or cell cycle control, transcriptional regulation, immune and stress response, cell differentiation, and apoptosis.(PMID: 19442227).

## Storage

Storage:

Store at -20°C. Avoid exposure to light. Stable for one year after shipment.

Storage Buffer:

PBS with 50% Glycerol, 0.05% Proclin300, 0.5% BSA, pH 7.3.

Aliquoting is unnecessary for -20°C storage

For technical support and original validation data for this product please contact:

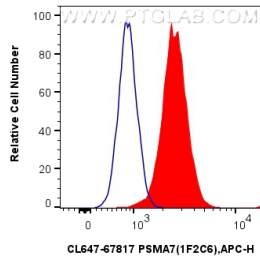
T: 4006900926

E: Proteintech-CN@ptglab.com

W: ptgcn.com

This product is exclusively available under Proteintech Group brand and is not available to purchase from any other manufacturer.

## Selected Validation Data



1X10<sup>6</sup> HeLa cells were intracellularly stained with 0.4 ug CoraLite® Plus 647 Anti-Human PSMA7 (CL647-67817, Clone:1F2C6) (red), or 0.4 ug CoraLite® Plus 647 Mouse IgG1 Isotype Control (MOPC-21) (CL647-65124, Clone: MOPC-21) (blue). Cells were fixed and permeabilized with True-Nuclear Transcription Factor Buffer Set.