

For Research Use Only

# CoraLite® Plus 647-conjugated Phospho-CHEK2 (Thr68) Recombinant antibody

Catalog Number: CL647-81740



## Basic Information

<b>Catalog Number:</b> CL647-81740	<b>GenBank Accession Number:</b> BC004207	<b>Purification Method:</b> Protein A purification
<b>Concentration:</b> 1000 ug/ml	<b>GeneID (NCBI):</b> 11200	<b>CloneNo.:</b> 1L2
<b>Source:</b> Rabbit	<b>UNIPROT ID:</b> O96017	<b>Excitation/Emission maxima wavelengths:</b> 654 nm / 674 nm
<b>Isotype:</b> IgG	<b>Full Name:</b> CHK2 checkpoint homolog (S. pombe)	
	<b>Calculated MW:</b> 61 kDa	
	<b>Observed MW:</b> 65 kDa	

## Applications

**Tested Applications:**  
FC (Intra)

**Species Specificity:**  
human

## Background Information

Serine/threonine-protein kinase Chk2 (CHEK2) is a serine/threonine kinase which is activated upon DNA damage and is implicated in pathways that govern DNA repair, cell cycle arrest or apoptosis in response to the initial damage. ATM phosphorylates CHEK2 on T68. Phosphorylation on T68 and subsequent full activation of CHEK2 was shown to require priming phosphorylation on adjacent residues by Polo-like kinase 3 (PLK3) and the dualspecificity tyrosine and serine/threoninekinase TTK/hMPS1. Additionally TTK appears to phosphorylate T68. Phosphorylation of T68 promotes the binding of the N-terminal SQ/TQ-rich cluster of one CHEK2 molecule with the FHA domain of another CHEK2 molecule. (PMID: 28553140, PMID: 18004398, PMID: 33322746)

## Storage

**Storage:**  
Store at -20°C. Avoid exposure to light. Stable for one year after shipment.

**Storage Buffer:**  
PBS with 50% Glycerol, 0.05% Proclin300, 0.5% BSA, pH 7.3.

**Aliquoting is unnecessary for -20°C storage**

For technical support and original validation data for this product please contact:

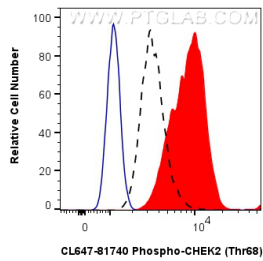
T: 4006900926

E: [Proteintech-CN@ptglab.com](mailto:Proteintech-CN@ptglab.com)

W: [ptgcn.com](http://ptgcn.com)

**This product is exclusively available under Proteintech Group brand and is not available to purchase from any other manufacturer.**

## Selected Validation Data



1X10<sup>6</sup> PC-3 cells untreated (dashed lines) or treated with MMS which intracellularly stained with 0.25 ug Coralite® Plus 647 Phospho-Chek2 (Thr68) Recombinant Antibody (CL647-81740, Clone:1L2)(red), or 0.25 ug Coralite® Plus 647 Rabbit IgG Isotype Control RecAb (CL647-98136, Clone: 240953C9) (blue). Cells were fixed with 4% PFA and permeabilized with 90% MeOH.