

For Research Use Only

# CoraLite® Plus 647-conjugated GBP2 Recombinant monoclonal antibody

Catalog Number: CL647-84264-6



## Basic Information

Catalog Number:

CL647-84264-6

Source:

Rabbit

Isotype:

IgG

Immunogen Catalog Number:

AG2425

GenBank Accession Number:

BC022272

GeneID (NCBI):

2634

UNIPROT ID:

P32456

Full Name:

guanylate binding protein 2,  
interferon-inducible

Calculated MW:

591 aa, 67 kDa

Purification Method:

Protein A purification

CloneNo.:

241580C12

Recommended Dilutions:

IF/ICC: 1:50-1:500

Excitation/Emission maxima  
wavelengths:

654 nm / 674 nm

## Applications

Tested Applications:

IF/ICC

Species Specificity:

human

Positive Controls:

IF/ICC : HeLa cells,

## Background Information

GBP2 is a member of the GTPase family and is crucial to host immunity against pathogens. GBP2 is also used as a marker of interferon (IFN) responsiveness because it is one of the most highly expressed genes after IFN- $\gamma$  stimulation. Increased GBP2 expression is also associated with a better prognosis in breast cancer and may have a role in T-cell defense against breast cancer. Interestingly, GBP2 expression in NIH/3T3 fibroblasts inhibited Rac activation and matrix metalloproteinase-9 expression, suggesting a possible role for GBP2 in regulating cancer metastasis. The molecular weight of GBP2 is 67 kDa. (PMID: 29072687, 35383115)

## Storage

Storage:

Store at -20°C. Avoid exposure to light. Stable for one year after shipment.

Storage Buffer:

PBS with 50% glycerol, 0.05% Proclin300, 0.5% BSA, pH7.3

Aliquoting is unnecessary for -20°C storage

For technical support and original validation data for this product please contact:

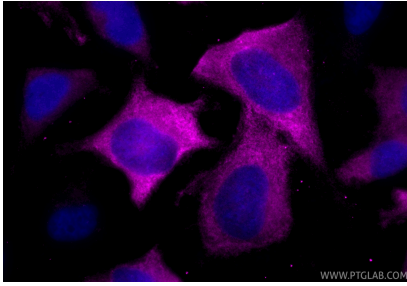
T: 4006900926

E: [Proteintech-CN@ptglab.com](mailto:Proteintech-CN@ptglab.com)

W: [ptgcn.com](http://ptgcn.com)

This product is exclusively available under Proteintech Group brand and is not available to purchase from any other manufacturer.

## Selected Validation Data



Immunofluorescent analysis of (-20°C Ethanol) fixed HeLa cells using CoraLite® Plus 647 GBP2 antibody (CL647-84264-6, Clone: 241580C12 ) at dilution of 1:200.