

For Research Use Only

CoraLite® Plus 647 Anti-Human CD200 Rabbit Recombinant Antibody



Catalog Number: CL647-98007

Basic Information

Catalog Number: CL647-98007	GenBank Accession Number: BC022522	Purification Method: Protein A purification
Size: 100tests, 5 µl/test	GeneID (NCBI): 4345	CloneNo.: 230268E6
Source: Rabbit	UNIPROT ID: P41217	Excitation/Emission maxima wavelengths: 654 nm / 674 nm
Isotype: IgG	Full Name: CD200 molecule	
	Calculated MW: 269 aa, 30 kDa	

Applications

Tested Applications:
FC

Species Specificity:
Human

Background Information

CD200, also known as OX2, is a type I transmembrane glycoprotein that belongs to the immunoglobulin superfamily (PMID: 3032785). It contains two extracellular immunoglobulin domains, a transmembrane and a cytoplasmic domain. CD200 is expressed on a variety of cell types, including thymocytes, B lymphocytes, a subset of T lymphocytes, follicular dendritic cells, neurons, and endothelial cells (PMID: 3032785; 10981966). CD200 binds to its receptor, CD200R, which is primarily expressed by myeloid and T cell lineage (PMID: 15187158). The CD200-CD200R interaction plays a role in immunosuppression and suppression of anti-tumor immune responses (PMID: 22020332).

Storage

Storage:
Store at 2-8°C. Avoid exposure to light. Stable for one year after shipment.

Storage Buffer:
PBS with 0.09% sodium azide and 0.5% BSA.

For technical support and original validation data for this product please contact:

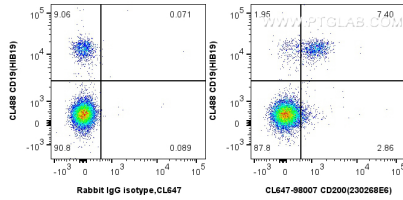
T: 4006900926

E: Proteintech-CN@ptglab.com

W: ptgcn.com

This product is exclusively available under Proteintech Group brand and is not available to purchase from any other manufacturer.

Selected Validation Data



1x10⁶ human PBMCs were surface stained with 5 ul CoraLite® Plus 647 Anti-Human CD200 (CL647-98007, Clone: 230268E6) or Isotype Control, and 5 ul CoraLite® Plus 488 Anti-Human CD19 (HIB19) (CL488-65110, Clone: HIB19). Cells were not fixed.