

For Research Use Only

# CoraLite® Plus 647 Anti-Mouse Gm-csf Rabbit Recombinant Antibody



Catalog Number:CL647-98014

## Basic Information

<b>Catalog Number:</b> CL647-98014	<b>GenBank Accession Number:</b> NM-009969	<b>Purification Method:</b> Protein A purification
<b>Size:</b> 100ug, 500 µg/ml	<b>GeneID (NCBI):</b> 12981	<b>CloneNo.:</b> 230286E11
<b>Source:</b> Rabbit	<b>UNIPROT ID:</b> P01587	<b>Excitation/Emission maxima wavelengths:</b> 654 nm / 674 nm
<b>Isotype:</b> IgG	<b>Full Name:</b> colony stimulating factor 2 (granulocyte-macrophage)	

## Applications

**Tested Applications:**  
FC (Intra)

**Species Specificity:**  
mouse

## Background Information

Gm-csf, also known as Csf2, is a monomeric glycoprotein secreted by macrophages, T cells, mast cells, NK cells, endothelial cells and fibroblasts that functions as a cytokine. Gm-csf was first characterized as a hematopoietic growth factor that stimulates the proliferation of myeloid cells from bone-marrow progenitors. Gm-csf is now recognized as an important activating and differentiation factor for immune cells, and is essential for a wide range of biological processes in both innate and adaptive immunity. Gm-csf has been shown to protect against pulmonary infection and intestinal inflammation, and it is necessary for normal pulmonary and colon homeostasis.

## Storage

**Storage:**  
Store at 2-8°C. Avoid exposure to light.

**Storage Buffer:**  
PBS with 0.09% sodium azide.

For technical support and original validation data for this product please contact:

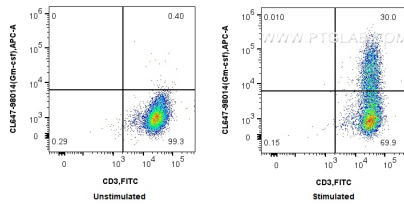
T: 4006900926

E: [Proteintech-CN@ptglab.com](mailto:Proteintech-CN@ptglab.com)

W: [ptgcn.com](http://ptgcn.com)

**This product is exclusively available under Proteintech Group brand and is not available to purchase from any other manufacturer.**

## Selected Validation Data



$1 \times 10^6$  unstimulated (left) or PMA and ionomycin stimulated (in the presence of protein transport inhibitors) (right) C57BL/6 CD3 T cells were intracellularly stained with 0.25  $\mu$ g CoraLite® Plus 647 Anti-Mouse Gm-csf Rabbit Recombinant Antibody (CL647-98014, Clone:23O286E11) and FITC Plus Anti-Mouse CD3. Cells were fixed with 4% PFA and permeabilized with Flow Cytometry Perm Buffer (PF00011-C).