

For Research Use Only

# CoraLite® Plus 647 Anti-Mouse TLR4/CD284 Rabbit Recombinant Antibody

Catalog Number: CL647-98018



## Basic Information

Catalog Number:

CL647-98018

Size:

100ug, 500 ug/ml

Source:

Rabbit

Isotype:

IgG

Immunogen Catalog Number:

AG32998

GenBank Accession Number:

NM\_021297

GeneID (NCBI):

21898

UNIPROT ID:

Q9QUK6

Full Name:

toll-like receptor 4

Calculated MW:

96 kDa

Purification Method:

Protein A purification

CloneNo.:

230463C7

Excitation/Emission maxima wavelengths:

654 nm / 674 nm

## Applications

Tested Applications:

FC

Species Specificity:

mouse

## Background Information

TLR4, also named as CD284, belongs to the Toll-like receptor family. TLR4 interacts with LY96 and CD14 to mediate the innate immune response to bacterial lipopolysaccharide (LPS). TLR4 acts via MYD88, TIRAP and TRAF6, leading to NF- $\kappa$ B activation, cytokine secretion and the inflammatory response. Three alternatively spliced transcript variants that encode different protein isoforms have been described.

## Storage

Storage:

Store at 2-8°C. Avoid exposure to light. Stable for one year after shipment.

Storage Buffer:

PBS with 0.09% sodium azide.

For technical support and original validation data for this product please contact:

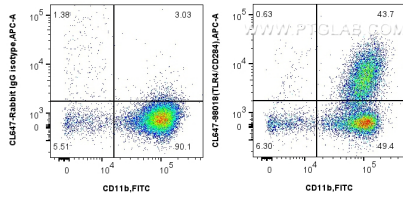
T: 4006900926

E: [Proteintech-CN@ptglab.com](mailto:Proteintech-CN@ptglab.com)

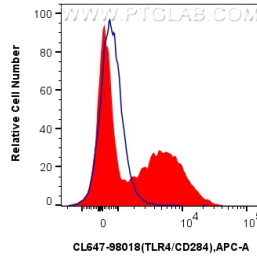
W: [ptgcn.com](http://ptgcn.com)

**This product is exclusively available under Proteintech Group brand and is not available to purchase from any other manufacturer.**

## Selected Validation Data



1x10<sup>6</sup> Balb/c mouse peritoneal macrophages were surface stained with FITC Plus Anti-Mouse CD11b and 0.25 ug CoraLite® Plus 647 Anti-Mouse TLR4/CD284 Rabbit Recombinant Antibody (CL647-98018, Clone: 230463C7) or Isotype Control. Cells were incubated with FC Receptor Block prior to staining. Cells were not fixed.



1x10<sup>6</sup> Balb/c mouse peritoneal macrophages were surface stained with 0.25 ug CoraLite® Plus 647 Anti-Mouse TLR4/CD284 Rabbit Recombinant Antibody (CL647-98018, Clone: 230463C7) (red) or Isotype Control (blue). Cells were incubated with FC Receptor Block prior to staining. Cells were not fixed.