

For Research Use Only

CoraLite® Plus 647 Anti-Human CD126/IL-6R alpha Rabbit Recombinant Antibody

Catalog Number: CL647-98057



Basic Information

Catalog Number:

CL647-98057

Concentration:

100tests, 5 ul/test

Source:

Rabbit

Isotype:

IgG

GenBank Accession Number:

BC132684

GeneID (NCBI):

3570

UNIPROT ID:

P08887

Full Name:

interleukin 6 receptor

Calculated MW:

468 aa, 52 kDa

Purification Method:

Protein A purification

CloneNo.:

240734A7

Excitation/Emission maxima wavelengths:

654 nm / 674 nm

Applications

Tested Applications:

FC

Species Specificity:

human

Background Information

Interleukin-6 (IL-6) is a pleiotropic cytokine produced by a variety of cells during infection, trauma, and immunological challenge (PMID: 8274730). IL-6 acts via a receptor complex consisting of two distinct membrane-bound glycoproteins, an 80-kDa IL-6-binding subunit (IL-6R alpha, CD126, gp80) and a 130-kDa signal-transducing element (gp130, CD130). After binding of IL-6 to membrane-bound IL-6R alpha, the complex of IL-6 and IL-6R alpha associates with gp130, thus activating the receptor (PMID: 9716487). Expression of gp130 is found in almost all organs while expression of IL-6R alpha is predominantly confined to hepatocytes and leukocyte subpopulations (monocytes, neutrophils, T cells, and B cells) (PMID: 11149892). Soluble form of IL-6R alpha has been found in human serum and urine (PMID: 2529343; 1545125).

Storage

Storage:

Store at 2-8°C. Avoid exposure to light. Stable for one year after shipment.

Storage Buffer:

PBS with 0.09% sodium azide and 0.5% BSA.

For technical support and original validation data for this product please contact:

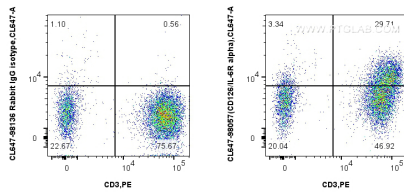
T: 4006900926

E: Proteintech-CN@ptglab.com

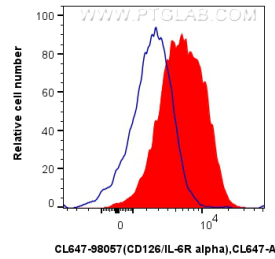
W: ptgcn.com

This product is exclusively available under Proteintech Group brand and is not available to purchase from any other manufacturer.

Selected Validation Data



1x10⁶ human PBMCs were surface stained with PE Anti-Human CD3 (OKT3) Mouse IgG2a Recombinant Antibody (PE-65569, Clone: OKT3), and 5 ul CoraLite® Plus 647 Anti-Human CD126/IL-6R alpha Rabbit RecAb (CL647-98057, Clone:240734A7) or CoraLite® Plus 647 Rabbit IgG Isotype Control RecAb (CL647-98136, Clone: 240953C9). Cells were not fixed. Lymphocytes were gated.



1x10⁶ human PBMCs were surface stained with 5 ul CoraLite® Plus 647 Anti-Human CD126/IL-6R alpha Rabbit RecAb (CL647-98057, Clone: 240734A7) (red) or CoraLite® Plus 647 Rabbit IgG Isotype Control RecAb (CL647-98136, Clone: 240953C9) (blue). Cells were not fixed. Lymphocytes were gated.