

For Research Use Only



CoraLite® Plus 647 Anti-Human Granzyme B Rabbit Recombinant Antibody

Catalog Number:CL647-98070

Basic Information

Catalog Number:

CL647-98070

Concentration:

100tests, 5 ul/test

Source:

Rabbit

Isotype:

IgG

Immunogen Catalog Number:

EG0592

GenBank Accession Number:

BC030195

GeneID (NCBI):

3002

UNIPROT ID:

P10144

Full Name:

granzyme B (granzyme 2, cytotoxic T-lymphocyte-associated serine esterase 1)

Calculated MW:

247 aa, 28 kDa

Purification Method:

Protein A purification

CloneNo.:

240761G4

Recommended Dilutions:

FC (Intra): 5 ul per 10⁶ cells in 100 µl suspension

Excitation/Emission maxima wavelengths:

654 nm / 674 nm

Applications

Tested Applications:

FC (Intra)

Species Specificity:

human

Positive Controls:

FC (Intra) : human PBMCs,

Background Information

GZMB (Granzyme B) is also named as CGL1, CSPB, CTLA1, GRB and belongs to the Granzyme subfamily. This enzyme is necessary for target cell lysis in cell-mediated immune responses. The cytotoxic lymphocyte protease granzyme B can promote apoptosis through direct processing and activation of members of the caspase family. Granzyme B can also cleave the BH3-only protein, BID, to promote caspase-independent mitochondrial permeabilization (PMID:17283187). Granzyme B induces lamin B degradation in isolated nuclei less efficiently than Granzyme A (PMID:11331782).

Storage

Storage:

Store at 2-8°C. Avoid exposure to light. Stable for one year after shipment.

Storage Buffer:

PBS with 0.09% sodium azide and 0.5% BSA, pH7.3

For technical support and original validation data for this product please contact:

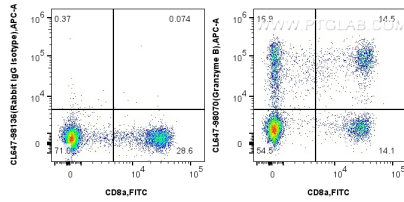
T: 4006900926

E: Proteintech-CN@ptglab.com

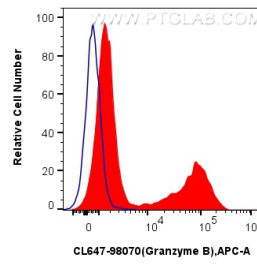
W: ptgcn.com

This product is exclusively available under Proteintech Group brand and is not available to purchase from any other manufacturer.

Selected Validation Data



1x10⁶ human PBMCs were intracellularly stained with FITC Plus Anti-Human CD8a, and 5 ul CoraLite® Plus 647 Anti-Human Granzyme B Rabbit RecAb (CL647-98070, Clone: 240761G4) or CoraLite® Plus 647 Rabbit IgG Isotype Control RecAb (CL647-98136, Clone: 240953C9). Cells were fixed with 4% PFA and permeabilized with Flow Cytometry Perm Buffer.



1x10⁶ human PBMCs were intracellularly stained with 5 ul CoraLite® Plus 647 Anti-Human Granzyme B Rabbit RecAb (CL647-98070, Clone: 240761G4) (red), or CoraLite® Plus 647 Rabbit IgG Isotype Control RecAb (CL647-98136, Clone: 240953C9) (blue). Cells were fixed with 4% PFA and permeabilized with Flow Cytometry Perm Buffer.