

For Research Use Only

# CoraLite® Plus 647 Anti-Human IL-7Ra/CD127 Rabbit Recombinant Antibody

Catalog Number: CL647-98074



## Basic Information

Catalog Number:

CL647-98074

Size:

100tests, 5 ul/test

Source:

Rabbit

Isotype:

IgG

GenBank Accession Number:

AAC83204.1

GeneID (NCBI):

3575

ENSEMBL Gene ID:

ENSG00000168685

UNIPROT ID:

P16871-1(I66T, V138I)

Full Name:

interleukin 7 receptor

Calculated MW:

52 kDa

Purification Method:

Protein A purification

CloneNo.:

240749H2

Excitation/Emission maxima wavelengths:

654 nm / 674 nm

## Applications

Tested Applications:

FC

Species Specificity:

human

## Background Information

CD127, also known as IL-7R subunit alpha (IL-7RA), is a type I membrane glycoprotein expressed on thymocytes, B cell precursors, most T cells, and some lymphoid and myeloid cells. IL-7R is a heterodimer composed of CD127 and the common- $\gamma$  chain receptor (CD132). IL-7R plays critical roles in lymphocyte development and homeostasis. CD127 can also act as a receptor for thymic stromal lymphopoietin (TSLP).

## Storage

Storage:

Store at 2-8°C. Avoid exposure to light. Stable for one year after shipment.

Storage Buffer:

PBS with 0.09% sodium azide and 0.5% BSA.

For technical support and original validation data for this product please contact:

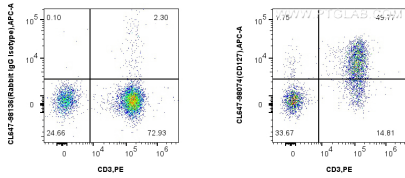
T: 4006900926

E: [Proteintech-CN@ptglab.com](mailto:Proteintech-CN@ptglab.com)

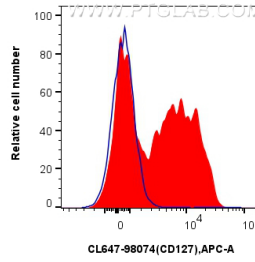
W: [ptgcn.com](http://ptgcn.com)

This product is exclusively available under Proteintech Group brand and is not available to purchase from any other manufacturer.

## Selected Validation Data



1x10<sup>6</sup> human PBMCs were surface stained with PE Anti-Human CD3 and 5 ul CoraLite® Plus 647 Anti-Human IL-7Ra/CD127 Rabbit Recombinant Antibody (CL647-98074, Clone: 240749H2), or CoraLite® Plus 647 Rabbit IgG Isotype Control Recombinant Antibody (CL647-98136, Clone: 240953C9). Cells were incubated with FC Receptor Block prior to staining. Cells were not fixed.



1x10<sup>6</sup> human PBMCs were surface stained with 5 ul CoraLite® Plus 647 Anti-Human IL-7Ra/CD127 Rabbit Recombinant Antibody (CL647-98074, Clone: 240749H2) (red), or CoraLite® Plus 647 Rabbit IgG Isotype Control Recombinant Antibody (CL647-98136, Clone: 240953C9) (blue). Cells were incubated with FC Receptor Block prior to staining. Cells were not fixed.