

For Research Use Only

CoraLite® Plus 647 Anti-Human CD23 Rabbit Recombinant Antibody

Catalog Number: CL647-98088



Basic Information

Catalog Number:

CL647-98088

Concentration:

100 tests, 5 µl/test

Source:

Rabbit

Isotype:

IgG

GenBank Accession Number:

BC064417

GeneID (NCBI):

2208

UNIPROT ID:

P06734

Full Name:

Fc fragment of IgE, low affinity II, receptor for (CD23)

Calculated MW:

321 aa, 36 kDa

Purification Method:

Protein A purification

CloneNo.:

241270C6

Excitation/Emission maxima wavelengths:

654 nm / 674 nm

Applications

Tested Applications:

FC

Species Specificity:

human

Background Information

CD23, also known as low affinity immunoglobulin epsilon Fc receptor, is a transmembrane glycoprotein present on a subpopulation of B lymphocytes in germinal centres, EBV-transformed B-lymphoblastoid cell lines, follicular dendritic cells, and a subpopulation of peripheral blood cells. CD23 has essential roles in the regulation of IgE production and in the differentiation of B-cells.

Storage

Storage:

Store at 2-8°C. Avoid exposure to light. Stable for one year after shipment.

Storage Buffer:

PBS with 0.09% sodium azide and 0.5% BSA.

For technical support and original validation data for this product please contact:

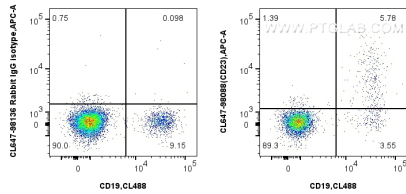
T: 4006900926

E: Proteintech-CN@ptglab.com

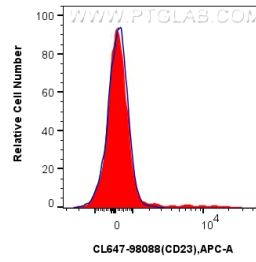
W: ptgcn.com

This product is exclusively available under Proteintech Group brand and is not available to purchase from any other manufacturer.

Selected Validation Data



1x10⁶ human PBMCs were surface stained with CoraLite® Plus 488 Anti-Human CD19, and 5 ul CoraLite® Plus 647 Anti-Human CD23 Rabbit RecAb (CL647-98088, Clone: 241270C6) or CoraLite® Plus 647 Rabbit IgG Isotype Control RecAb (CL647-98136, Clone: 240953C9). Cells were not fixed. Lymphocytes were gated.



1x10⁶ human PBMCs were surface stained with 5 ul CoraLite® Plus 647 Anti-Human CD23 Rabbit RecAb (CL647-98088, Clone: 241270C6) (red) or CoraLite® Plus 647 Rabbit IgG Isotype Control RecAb (CL647-98136, Clone: 240953C9) (blue). Cells were not fixed. Lymphocytes were gated.