

For Research Use Only

# CoraLite® Plus 647 Anti-Human IL3RA/CD123 Rabbit Recombinant Antibody

Catalog Number: CL647-98107



## Basic Information

<b>Catalog Number:</b> CL647-98107	<b>GenBank Accession Number:</b> BC035407	<b>Purification Method:</b> Protein A purification
<b>Concentration:</b> 100tests, 5 ul/test	<b>GeneID (NCBI):</b> 3563	<b>CloneNo.:</b> 241268E3
<b>Source:</b> Rabbit	<b>ENSEMBL Gene ID:</b> ENSG00000185291	<b>Excitation/Emission maxima wavelengths:</b> 654 nm / 674 nm
<b>Isotype:</b> IgG	<b>UNIPROT ID:</b> P26951	
	<b>Full Name:</b> interleukin 3 receptor, alpha (low affinity)	
	<b>Calculated MW:</b> 378 aa, 43 kDa	

## Applications

**Tested Applications:**  
FC

**Species Specificity:**  
human

## Background Information

Interleukin-3 receptor subunit alpha (IL3RA), also known as CD123, belongs to the cytokine receptor family. It is a glycoprotein containing an extracellular domain, involving a predicted Ig-like domain, two FnIII domains, a transmembrane domain and an intracellular domain (PMID: 24513123). IL3RA is expressed on hematopoietic progenitor cells, plasmacytoid dendritic cells, basophils, monocytes, some B cells, and in a variety of hematologic malignancies (PMID: 10527461; 34855461). IL-3 initially binds to IL3RA and subsequently recruits the beta chain (CD131) to form the high-affinity receptor, resulting in the activation of a series of signaling pathways including the JAK/STAT, Ras-MAPK, and phosphatidylinositol 3-kinase pathways (PMID: 29296749). IL-3R signaling regulates the proliferation, survival, and differentiation of hematopoietic cells.

## Storage

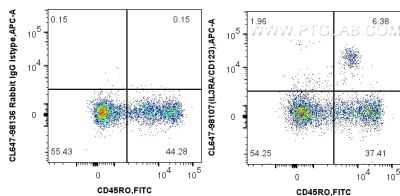
**Storage:**  
Store at 2-8°C. Avoid exposure to light. Stable for one year after shipment.

**Storage Buffer:**  
PBS with 0.09% sodium azide.

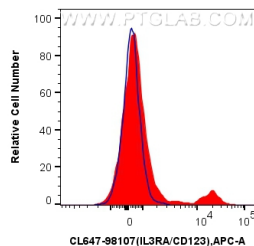
For technical support and original validation data for this product please contact:  
T: 4006900926 E: Proteintech-CN@ptglab.com W: ptgcn.com

This product is exclusively available under Proteintech Group brand and is not available to purchase from any other manufacturer.

## Selected Validation Data



1x10<sup>6</sup> FC PBMCs were surface stained with FITC Plus Anti-Human CD45RO and 5 ul CoraLite® Plus 647 Anti-Human IL3RA/CD123 Rabbit Recombinant Antibody (CL647-98107, Clone:241268E3), or CoraLite® Plus 647 Rabbit IgG Isotype Control Recombinant Antibody (CL647-98136, Clone: 240953C9). Cells were incubated with FC Receptor Block prior to staining. Cells were not fixed. Lymphocytes were gated.



1x10<sup>6</sup> human PBMCs were surface stained with 5 ul CoraLite® Plus 647 Anti-Human IL3RA/CD123 Rabbit Recombinant Antibody (CL647-98107, Clone:241268E3)(red), or CoraLite® Plus 647 Rabbit IgG Isotype Control Recombinant Antibody (CL647-98136, Clone: 240953C9)(blue). Cells were incubated with FC Receptor Block prior to staining. Cells were not fixed. Lymphocytes were gated.