

For Research Use Only

CoraLite® Plus 647 Anti-Human CD38 Rabbit Recombinant Antibody

Catalog Number:CL647-98148



Basic Information

Catalog Number: CL647-98148	GenBank Accession Number: BC007964	Purification Method: Protein A purification
Concentration: 100tests, 5 ul/test	GeneID (NCBI): 952	CloneNo.: 241246F9
Source: Rabbit	ENSEMBL Gene ID: ENSG00000004468	Excitation/Emission maxima wavelengths: 654 nm / 674 nm
Isotype: IgG	UNIPROT ID: P28907	
Immunogen Catalog Number: EG0110	Full Name: CD38 molecule	
	Calculated MW: 300 aa, 34 kDa	

Applications

Tested Applications:
FC

Species Specificity:
human

Background Information

CD38, also known as ADP-ribosyl cyclase 1, is a type II transmembrane glycoprotein with a short N-terminal cytoplasmic tail, a single membrane-spanning domain, and a C-terminal extracellular region with four N-glycosylation sites (PMID: 2319135). The extracellular domain of CD38 has bifunctional enzyme activities that catalyze synthesis of cyclic ADP ribose from nicotinamide adenine dinucleotide (NAD) and hydrolysis of cyclic ADP ribose to adenosine diphosphoribose (PMID: 10636863). CD38 is expressed on a variety of hematopoietic and non-hematopoietic cells and is involved in diverse processes such as generation of calcium-mobilizing metabolites, cell activation, and chemotaxis (PMID: 25938500).

Storage

Storage:
Store at 2-8°C. Avoid exposure to light. Stable for one year after shipment.
Storage Buffer:
PBS with 0.09% sodium azide, pH7.3

For technical support and original validation data for this product please contact:

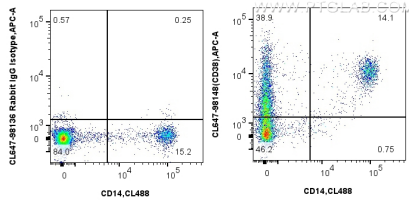
T: 4006900926

E: Proteintech-CN@ptglab.com

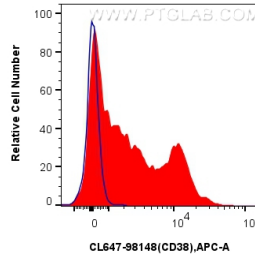
W: ptgcn.com

This product is exclusively available under Proteintech Group brand and is not available to purchase from any other manufacturer.

Selected Validation Data



1x10⁶ human PBMCs were surface stained with CL488 Anti-Human CD14, and 5 ul CoraLite® Plus 647 Anti-Human CD38 Rabbit RecAb (CL647-98148, Clone: 241246F9) or CoraLite® Plus 647 Rabbit IgG Isotype Control RecAb (CL647-98136, Clone: 240953C9). Cells were incubated with FC Receptor Block prior to staining. Cells were not fixed.



1x10⁶ human PBMCs were surface stained with 5 ul CoraLite® Plus 647 Anti-Human CD38 Rabbit RecAb (CL647-98148, Clone: 241246F9) (red) or CoraLite® Plus 647 Rabbit IgG Isotype Control RecAb (CL647-98136, Clone: 240953C9) (blue). Cells were incubated with FC Receptor Block prior to staining. Cells were not fixed.