

For Research Use Only

# CoraLite® Plus 647 Anti-Human IL-23R Rabbit Recombinant Antibody

Catalog Number: CL647-98180



## Basic Information

Catalog Number:

CL647-98180

Concentration:

100 tests, 5 µl/test

Source:

Rabbit

Isotype:

IgG

GenBank Accession Number:

NM\_144701.3

GeneID (NCBI):

149233

UNIPROT ID:

Q5VWK5-1

Full Name:

interleukin 23 receptor

Calculated MW:

72 kDa

Purification Method:

Protein A purification

CloneNo.:

240905B5

Excitation/Emission maxima wavelengths:

654 nm / 674 nm

## Applications

Tested Applications:

FC

Species Specificity:

human

## Background Information

Interleukin-23 receptor (IL-23R) is a type I cytokine receptor that plays a critical role in immune responses and inflammation. It forms a receptor complex with IL-12R  $\beta$  1 and is activated by the cytokine IL-23, which is primarily produced by dendritic cells and activated macrophages (PMID: 39796684). The genetic and epigenetic interactions in the IL-23R/IL-17 axis are associated with elevated expression of IL-17 and inflammatory bowel disease (IBD) pathogenesis (PMID: 21672939).

## Storage

Storage:

Store at 2-8°C. Avoid exposure to light. Stable for one year after shipment.

Storage Buffer:

PBS with 0.09% sodium azide and 0.5% BSA.

For technical support and original validation data for this product please contact:

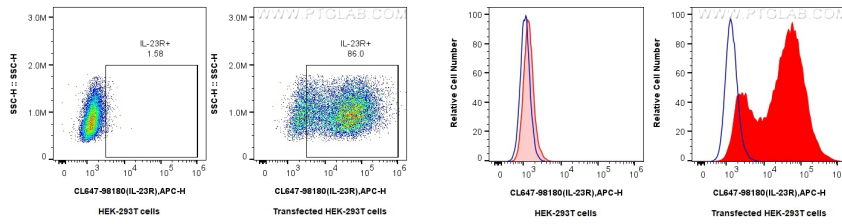
T: 4006900926

E: [Proteintech-CN@ptglab.com](mailto:Proteintech-CN@ptglab.com)

W: [ptgcn.com](http://ptgcn.com)

This product is exclusively available under Proteintech Group brand and is not available to purchase from any other manufacturer.

## Selected Validation Data



1x10<sup>6</sup> Transfected HEK-293T cells were stained with 0.25 ug CoraLite® Plus 647 Anti-Human IL-23R Rabbit RecAb (CL647-98180, Clone:240905B5)(red), or 0.25 ug CoraLite® Plus 647 Rabbit IgG Isotype Control RecAb (CL647-98136, Clone: 240953C9) (blue). Cells were fixed with 4% PFA and permeabilized with Flow Cytometry Perm Buffer (PF00011-C).

1x10<sup>6</sup> Transfected HEK-293T cells were stained with 0.25 ug CoraLite® Plus 647 Anti-Human IL-23R Rabbit RecAb (CL647-98180, Clone:240905B5)(red), or 0.25 ug CoraLite® Plus 647 Rabbit IgG Isotype Control RecAb (CL647-98136, Clone: 240953C9) (blue). Cells were fixed with 4% PFA and permeabilized with Flow Cytometry Perm Buffer (PF00011-C).