

For Research Use Only

CoraLite® Plus 647 Anti-Human CD29 Rabbit Recombinant Antibody

Catalog Number:CL647-98188



Basic Information

Catalog Number: CL647-98188	GenBank Accession Number: BC020057	Purification Method: Protein A purification
Concentration: 100tests, 5 ul/test	GeneID (NCBI): 3688	CloneNo.: 241685C10
Source: Rabbit	ENSEMBL Gene ID: ENSG00000150093	Excitation/Emission maxima wavelengths: 654 nm / 674 nm
Isotype: IgG	UNIPROT ID: P05556	
Immunogen Catalog Number: EG2093	Full Name: integrin, beta 1 (fibronectin receptor, beta polypeptide, antigen CD29 includes MDF2, MSK12)	
	Calculated MW: 88 kDa	

Applications

Tested Applications:
FC

Species Specificity:
human

Background Information

Integrin beta-1 (ITGB1), also named as CD29, is a 130 kDa single chain type I glycoprotein that is expressed in a heterodimeric complex with one of six distinct α subunits, comprising the very late activation antigen (VLA) subfamily of adhesion receptors. It is one of the essential surface molecules expressed on human MSC from bone marrow and other sources. The β 1 subunit is also broadly expressed on lymphocytes and monocytes, weakly expressed on granulocytes, and not expressed on erythrocytes. These receptors are involved in a variety of cell-cell and cell-matrix interactions.

Storage

Storage:
Store at 2-8°C. Avoid exposure to light. Stable for one year after shipment.

Storage Buffer:
PBS with 0.09% sodium azide and 0.5% BSA, pH7.3

For technical support and original validation data for this product please contact:

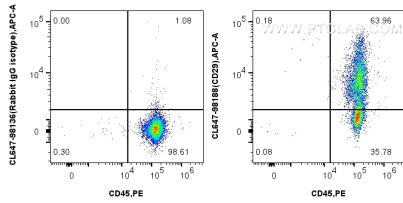
T: 4006900926

E: Proteintech-CN@ptglab.com

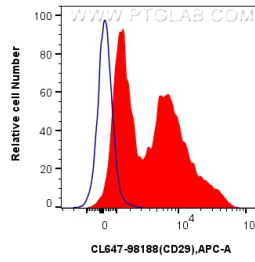
W: ptgcn.com

This product is exclusively available under Proteintech Group brand and is not available to purchase from any other manufacturer.

Selected Validation Data



1x10⁶ human PBMCs were surface stained with PE Anti-Human CD45 Rabbit Recombinant Antibody (PE-98117, Clone: 241670E10), and 5 ul CoraLite® Plus 647 Anti-Human CD29 Rabbit RecAb (CL647-98188, Clone: 241685C10) or CoraLite® Plus 647 Rabbit IgG Isotype Control RecAb (CL647-98136, Clone: 240953C9). Cells were incubated with FC Receptor Block prior to fixing and staining. Cells were not fixed.



1x10⁶ human PBMCs were surface stained with 5 ul CoraLite® Plus 647 Anti-Human CD29 Rabbit RecAb (CL647-98188, Clone:241685C10) (red) or CoraLite® Plus 647 Rabbit IgG Isotype Control RecAb (CL647-98136, Clone: 240953C9) (blue). Cells were incubated with FC Receptor Block prior to fixing and staining. Cells were not fixed.