

For Research Use Only

CoraLite® Plus 647 Anti-Mouse Neutrophil elastase Rabbit Recombinant Antibody

Catalog Number: CL647-98197



Basic Information

| | | |
|--|---|---|
| Catalog Number: CL647-98197 | GenBank Accession Number: NM_015779.2 | Purification Method: Protein A purification |
| Concentration: 100ug, 500 ug/ml | GeneID (NCBI): 50701 | CloneNo.: 241842G3 |
| Source: Rabbit | UNIPROT ID: Q3UP87 | Recommended Dilutions: FC (Intra): 0.25 ug per 10 ⁶ cells in 100 µL suspension |
| Isotype: IgG | Full Name: elastase 2, neutrophil | Excitation/Emission maxima wavelengths: 654 nm / 674 nm |
| Immunogen Catalog Number: EG2126 | Calculated MW: 29 kDa | |

Applications

| | |
|---|--|
| Tested Applications: FC (Intra) | Positive Controls: FC (Intra) : mouse bone marrow cells, |
| Species Specificity: mouse | |

Background Information

ELA2 (Neutrophil elastase) is also named as ELAL, NE, HLE, HNE, PMN-E, SERP1, GE, ELANE and belongs to the peptidase S1 family. It is a 33-kDa enzyme with several isoforms that differ in their extent of glycosylation (PMID:12223222). Human neutrophil elastase (HNE) is a serine protease with potent proteolytic activity (3), which is reported to cause mucin secretion (degranulation) (PMID:12169572). It may contribute to the directed migration of leukocytes into flamed postcapillary venules in addition to contributing to the process of tissue emigration (PMID:9683424).

Storage

Storage:
Store at 2-8°C. Avoid exposure to light. Stable for one year after shipment.
Storage Buffer:
PBS with 0.09% sodium azide, pH7.3

For technical support and original validation data for this product please contact:

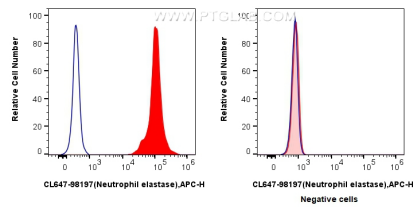
T: 4006900926

E: Proteintech-CN@ptglab.com

W: ptgcn.com

This product is exclusively available under Proteintech Group brand and is not available to purchase from any other manufacturer.

Selected Validation Data



1×10^6 mouse bone marrow cells (left) or NIH/3T3 cells (right) were intracellularly stained with 0.25 μ g Coralite® Plus 647 Anti-Mouse Neutrophil elastase Rabbit RecAb (CL647-98197, Clone:241842G3) (red) or Coralite® Plus 647 Rabbit IgG Isotype Control RecAb (CL647-98136, Clone: 240953C9) (blue). Cells were fixed with 4% PFA and permeabilized with Flow Cytometry Perm Buffer.