

For Research Use Only

CoraLite® Plus 647 Anti-Mouse CD79b Rabbit Recombinant Antibody

Catalog Number: CL647-98217



Basic Information

Catalog Number:

CL647-98217

Concentration:

100ug, 500 ug/ml

Source:

Rabbit

Isotype:

IgG

GenBank Accession Number:

NM_008339.3

GeneID (NCBI):

15985

UNIPROT ID:

P15530

Full Name:

CD79B antigen

Calculated MW:

26 kDa

Purification Method:

Protein A purification

CloneNo.:

241850D10

Excitation/Emission maxima wavelengths:

654 nm / 674 nm

Applications

Tested Applications:

FC

Species Specificity:

mouse

Background Information

CD79 molecule encompasses two transmembrane proteins, CD79a and CD79b, which form a disulfide-linked heterodimer and are members of the immunoglobulin (Ig) gene superfamily (PMID: 2033258; 1375264; 2304550). CD79b molecule (also known as B29, IGB, AGM6, and Igbeta) is expressed almost exclusively on B cells and B-cell neoplasms, influencing antigen internalization and increasing antigen presentation efficiency (PMID: 7552998). CD79b mutation could be a key biomarker for DLBCL disease progression (PMID: 36182550).

Storage

Storage:

Store at 2-8°C. Avoid exposure to light. Stable for one year after shipment.

Storage Buffer:

PBS with 0.09% sodium azide

For technical support and original validation data for this product please contact:

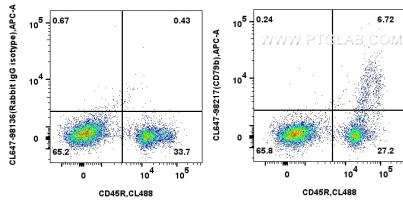
T: 4006900926

E: Proteintech-CN@ptglab.com

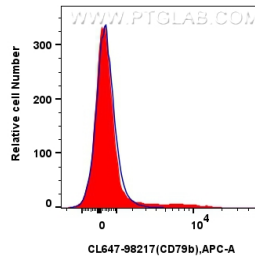
W: ptgcn.com

This product is exclusively available under Proteintech Group brand and is not available to purchase from any other manufacturer.

Selected Validation Data



1x10⁶ mouse bone marrow cells were stained with CoraLite® Plus 488 Anti-Mouse CD45R (B220) (RA3-6B2) (CL488-65139, Clone: RA3-6B2), and 0.25 ug CoraLite® Plus 647 Anti-Mouse CD79b Rabbit RecAb (CL647-98217, Clone:241850D10) or CoraLite® Plus 647 Rabbit IgG Isotype Control RecAb (CL647-98136, Clone: 240953C9). Cells were not fixed.



1x10⁶ mouse bone marrow cells were stained with 0.25 ug CoraLite® Plus 647 Anti-Mouse CD79b Rabbit RecAb (CL647-98217, Clone: 241850D10) (red) or CoraLite® Plus 647 Rabbit IgG Isotype Control RecAb (CL647-98136, Clone: 240953C9) (blue). Cells were not fixed.