

For Research Use Only

FcZero-rAb® CoraLite® Plus 647 Anti-Human CD64 (10.1) Rabbit Recombinant Antibody



Catalog Number: CL647-FcA65572

Basic Information

Catalog Number:

CL647-FcA65572

Concentration:

100tests, 5 ul/test

Source:

Rabbit

Isotype:

IgG

GenBank Accession Number:

BC032634

GeneID (NCBI):

2209

ENSEMBL Gene ID:

ENSG00000150337

UNIPROT ID:

P12314

Full Name:

Fc fragment of IgG, high affinity Ia, receptor (CD64)

Calculated MW:

374 aa, 43 kDa

Purification Method:

Protein A purification

CloneNo.:

10.1

Recommended Dilutions:

FC: 5 ul per 10⁶ cells in a 100 µl suspension

Excitation/Emission maxima wavelengths:

654 nm / 674 nm

Applications

Tested Applications:

FC

Species Specificity:

human, monkey, non-human primates

Positive Controls:

FC : human PBMCs,

Background Information

Fc γ receptor comprise a multigene family of integral membrane glycoproteins that exhibit complex activation or inhibitory effects on cell functions after aggregation by complexed immunoglobulin G (IgG) (PMID: 17005690). CD64, also known as Fc γ RIA, is a high-affinity receptor for the Fc region of IgG. It is expressed by monocytes/macrophages, activated neutrophils, dendritic cells, and early myeloid cells (PMID: 23293080; 19642859; 7680917). CD64 functions in both innate and adaptive immune responses.

Storage

Storage:

Store at 2-8°C. Avoid exposure to light. Stable for one year after shipment.

Storage Buffer:

PBS with 0.09% sodium azide and 0.5% BSA, pH7.3

For technical support and original validation data for this product please contact:

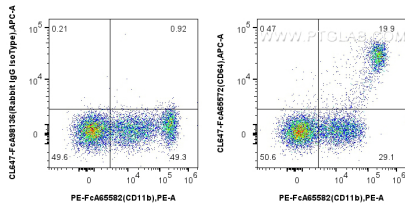
T: 4006900926

E: Proteintech-CN@ptglab.com

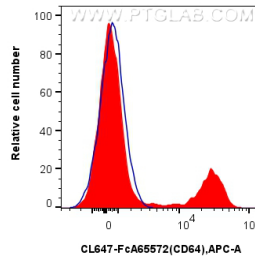
W: ptgcn.com

This product is exclusively available under Proteintech Group brand and is not available to purchase from any other manufacturer.

Selected Validation Data



1x10⁶ human PBMCs were surface stained with PE Anti-Human CD11b (ICRF44), and 5 ul CoraLite® Plus 647 Anti-Human CD64 (10.1) Rabbit RecAb (CL647-FcA65572, Clone: 10.1) or FcZero-rAb® CoraLite® Plus 647 Rabbit IgG Isotype Control Recombinant Antibody (CL647-FcA98136, Clone: 240953C9). Cells were not fixed.



1x10⁶ human PBMCs were surface stained with 5 ul CoraLite® Plus 647 Anti-Human CD64 (10.1) Rabbit RecAb (CL647-FcA65572, Clone: 10.1) (red) or FcZero-rAb® CoraLite® Plus 647 Rabbit IgG Isotype Control Recombinant Antibody (CL647-FcA98136, Clone: 240953C9) (blue). Cells were not fixed.