

For Research Use Only

# FcZero-rAb® CoraLite® Plus 647 Anti-Human CD14 Rabbit Recombinant Antibody

Catalog Number: CL647-FcA98040



## Basic Information

<b>Catalog Number:</b> CL647-FcA98040	<b>GenBank Accession Number:</b> BC010507	<b>Purification Method:</b> Protein A purification
<b>Concentration:</b> 100tests, 5 ul/test	<b>GeneID (NCBI):</b> 929	<b>CloneNo.:</b> 230332D7
<b>Source:</b> Rabbit	<b>ENSEMBL Gene ID:</b> ENSG00000170458	<b>Recommended Dilutions:</b> FC: 5 ul per 10 <sup>6</sup> cells in a 100 µl suspension
<b>Isotype:</b> IgG	<b>UNIPROT ID:</b> P08571	<b>Excitation/Emission maxima wavelengths:</b> 654 nm / 674 nm
<b>Immunogen Catalog Number:</b> EG0498	<b>Full Name:</b> CD14 molecule	
	<b>Calculated MW:</b> 375 aa, 40 kDa	

## Applications

<b>Tested Applications:</b> FC	<b>Positive Controls:</b> FC : human PBMCs,
<b>Species Specificity:</b> human, monkey, non-human primates	

## Background Information

CD14 is a 50-55 kDa glycosylphosphatidylinositol-anchored glycoprotein preferentially expressed on monocytes and macrophages, and at lower levels on granulocytes (PMID: 3385210; 2462937; 7685797). CD14 can also exist as a soluble protein. CD14 acts as a co-receptor for bacterial liposaccharides (LPS) (PMID: 1698311). It plays a major role in the inflammatory response of monocytes to LPS.

## Storage

**Storage:**  
Store at 2-8°C. Avoid exposure to light. Stable for one year after shipment.  
**Storage Buffer:**  
PBS with 0.09% sodium azide and 0.5% BSA, pH7.3

For technical support and original validation data for this product please contact:

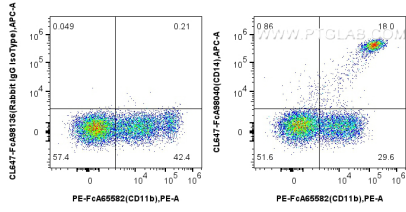
T: 4006900926

E: Proteintech-CN@ptglab.com

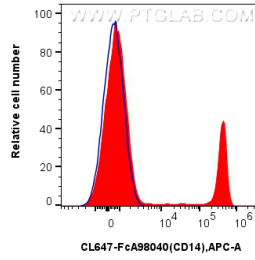
W: ptgcn.com

This product is exclusively available under Proteintech Group brand and is not available to purchase from any other manufacturer.

## Selected Validation Data



1x10<sup>6</sup> human PBMCs were surface stained with PE Anti-Human CD11b (ICRF44), and 5 ul CoraLite® Plus 647 Anti-Human CD14 Rabbit RecAb (CL647-FcA98040, Clone: 230332D7) or Rabbit IgG Isotype Control RecAb (CL647-FcA98136, Clone: 240953C9). Cells were not fixed.



1x10<sup>6</sup> human PBMCs were surface stained with 5 ul CoraLite® Plus 647 Anti-Human CD14 Rabbit RecAb (CL647-FcA98040, Clone: 230332D7) (red) or Rabbit IgG Isotype Control RecAb (CL647-FcA98136, Clone: 240953C9) (blue). Cells were not fixed.