

For Research Use Only

# CoraLite®700 Anti-Human CD14 Rabbit Recombinant Antibody

Catalog Number: CL700-98040



## Basic Information

### Catalog Number:

CL700-98040

### Concentration:

100 tests, 5 µl/test

### Source:

Rabbit

### Isotype:

IgG

### Immunogen Catalog Number:

EG0498

### GenBank Accession Number:

BC010507

### GeneID (NCBI):

929

### ENSEMBL Gene ID:

ENSG00000170458

### UNIPROT ID:

P08571

### Full Name:

CD14 molecule

### Calculated MW:

375 aa, 40 kDa

### Purification Method:

Protein A purification

### CloneNo.:

230332D7

### Recommended Dilutions:

FC: 5 µl per 10<sup>6</sup> cells in a 100 µl suspension

### Excitation/Emission maximum wavelengths:

702 nm / 723 nm

## Applications

### Tested Applications:

FC

### Species Specificity:

human, monkey, non-human primates

### Positive Controls:

FC : human PBMCs,

## Background Information

CD14 is a 50-55 kDa glycosylphosphatidylinositol-anchored glycoprotein preferentially expressed on monocytes and macrophages, and at lower levels on granulocytes (PMID: 3385210; 2462937; 7685797). CD14 can also exist as a soluble protein. CD14 acts as a co-receptor for bacterial liposaccharides (LPS) (PMID: 1698311). It plays a major role in the inflammatory response of monocytes to LPS.

## Storage

### Storage:

Store at 2-8°C. Avoid exposure to light. Stable for one year after shipment.

### Storage Buffer:

PBS with 0.09% sodium azide and 0.5% BSA, pH7.3

For technical support and original validation data for this product please contact:

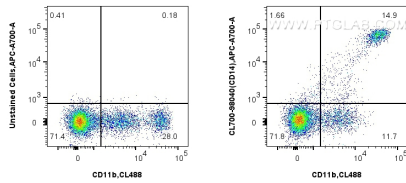
T: 4006900926

E: [Proteintech-CN@ptglab.com](mailto:Proteintech-CN@ptglab.com)

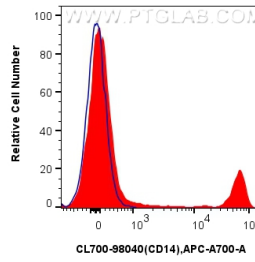
W: [ptgcn.com](http://ptgcn.com)

This product is exclusively available under Proteintech Group brand and is not available to purchase from any other manufacturer.

## Selected Validation Data



1x10<sup>6</sup> human PBMCs were surface stained with CoraLite® Plus 488 Anti-Human CD11b, and 5 ul CoraLite®700 Anti-Human CD14 Rabbit RecAb (CL700-98040, Clone: 230332D7) or unstained. Cells were incubated with FC Receptor Block prior to staining. Cells were not fixed.



1x10<sup>6</sup> human PBMCs were surface stained with 5 ul CoraLite®700 Anti-Human CD14 Rabbit RecAb (CL700-98040, Clone: 230332D7) (red) or unstained (blue). Cells were incubated with FC Receptor Block prior to staining. Cells were not fixed.