

For Research Use Only

CoraLite® Plus 750-conjugated SECTM1 Monoclonal antibody

Catalog Number:CL750-60281



Basic Information

Catalog Number: CL750-60281	GenBank Accession Number: BC017716	Purification Method: Thiophilic affinity chromatograph
Size: 1000 µg/ml	GeneID (NCBI): 6398	CloneNo.: 1C11B4
Source: Mouse	UNIPROT ID: Q8WVN6	Recommended Dilutions: WB 1:500-1:1000
Isotype: IgM	Full Name: secreted and transmembrane 1	Excitation/Emission maxima wavelengths: 755 nm / 780 nm
Immunogen Catalog Number: AG14645	Calculated MW: 248 aa, 27 kDa	
	Observed MW: 27 kDa	

Applications

Tested Applications: WB	Positive Controls: WB : K-562 cells,
Species Specificity: human	

Background Information

SECTM1, also named as protein K12, is originally identified by its location just upstream of the CD7 locus. It has been proposed as a ligand for CD7. SECTM1 is involved in thymocyte signaling. This antibody is specific to SECTM1.

Storage

Storage:
Store at -20°C. Avoid exposure to light. Stable for one year after shipment.
Storage Buffer:
PBS with 50% Glycerol, 0.05% Proclin300, 0.5% BSA, pH 7.3.
Aliquoting is unnecessary for -20°C storage

For technical support and original validation data for this product please contact:

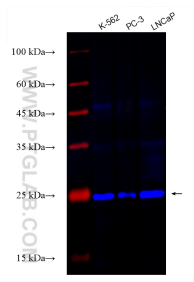
T: 4006900926

E: Proteintech-CN@ptglab.com

W: ptgcn.com

This product is exclusively available under Proteintech Group brand and is not available to purchase from any other manufacturer.

Selected Validation Data



Various lysates were subjected to SDS PAGE followed by western blot with CL750-60281 (SECTM1 antibody) at dilution of 1:500 incubated at room temperature for 1.5 hours.