

For Research Use Only

# CoraLite® Plus 750 Anti-Human CD28 (CD28.2)



Catalog Number:CL750-65099

## Basic Information

<b>Catalog Number:</b> CL750-65099	<b>GenBank Accession Number:</b> BC093698	<b>Purification Method:</b> Affinity purification
<b>Size:</b> 100tests, 5 µl/test	<b>GeneID (NCBI):</b> 940	<b>CloneNo.:</b> CD28.2
<b>Source:</b> Mouse	<b>ENSEMBL Gene ID:</b> ENSG00000178562	<b>Excitation/Emission maxima wavelengths:</b> 755 nm / 780 nm
<b>Isotype:</b> IgG1	<b>UNIPROT ID:</b> P10747	
	<b>Full Name:</b> CD28 molecule	
	<b>Calculated MW:</b> 220 aa, 25 kDa	

## Applications

**Tested Applications:**  
FC  
**Species Specificity:**  
Human

## Background Information

CD28 (T-cell-specific surface glycoprotein CD28), also known as T44 and Tp44, is a 44 kD disulfide-linked homodimeric type I glycoprotein (PMID: 2162180). It is a member of the immunoglobulin superfamily and is expressed on most T lineage cells, NK cell subsets, and plasma cells (PMID: 2162180, 8386518). CD28 may affect in vivo immune responses by functioning both as a cell adhesion molecule linking B and T lymphocytes and as the surface component of a novel signal transduction pathway (PMID: 2162180, 3021470). CD28 binds both CD80 and CD86 with a highly conserved motif MYPPY in the CDR3-like loop (PMID: 15696168, 7964482). CD28 is considered a major co-stimulatory molecule, inducing T lymphocyte activation and IL-2 synthesis, and preventing cell death (PMID: 1348520).

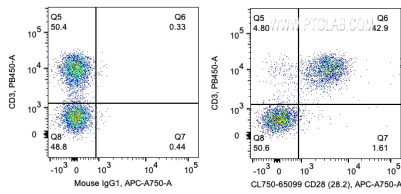
## Storage

**Storage:**  
Store at 2-8°C. Avoid exposure to light. Stable for one year after shipment.  
**Storage Buffer:**  
PBS with 0.09% sodium azide and 0.5% BSA.

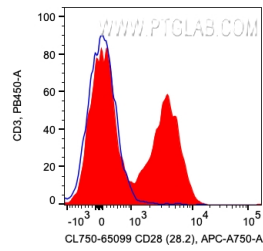
For technical support and original validation data for this product please contact:  
T: 4006900926 E: Proteintech-CN@ptglab.com W: ptgcn.com

This product is exclusively available under Proteintech Group brand and is not available to purchase from any other manufacturer.

## Selected Validation Data



1X10<sup>6</sup> human PBMCs were surface co-stained with Pacific Blue Anti-Human CD3 and 5 ul CoraLite® Plus 750 Anti-Human CD28 (CL750-65099, Clone: CD28.2) or Mouse IgG1 Isotype Control. Cells were not fixed. Lymphocytes were gated.



1X10<sup>6</sup> human PBMCs were surface stained with 5 ul CoraLite® Plus 750 Anti-Human CD28 (CL750-65099, Clone: CD28.2) or Mouse IgG1 Isotype Control. Cells were not fixed. Lymphocytes were gated.