

For Research Use Only

CoraLite® Plus 750 Anti-Human MICA/MICB (6D4)



Catalog Number: CL750-65161

Basic Information

Catalog Number:

CL750-65161

Size:

100 tests, 5 µl/test

Source:

Mouse

Isotype:

IgG2a, kappa

GenBank Accession Number:

BC016929

GeneID (NCBI):

100507436

UNIPROT ID:

Q29983

Full Name:

MHC class I polypeptide-related sequence A

Calculated MW:

383 aa, 43 kDa

Purification Method:

Purified by protein-A affinity chromatography

CloneNo.:

6D4

Excitation/Emission maximum wavelengths:

755 nm / 780 nm

Applications

Tested Applications:

FC

Species Specificity:

Human

Background Information

Human MHC class I chain-related genes located within the HLA class I region of chromosome 6 encode MHC class I chain-related A and B (MICA and MICB) (PMID: 11429322). MICA and MICB are stress-inducible surface molecules that are not associated with β 2-microglobulin and do not present peptides (PMID: 9497295). They are expressed in intestinal epithelium and many epithelial tumors (PMID: 10359807). MICA and MICB are ligands for NKG2D which is an activating receptor that is expressed on most natural killer (NK) cells, CD8 α β T cells, and γ δ T cells (PMID: 10426993; 11491531). The monoclonal antibody 6D4 recognizes MICA and MICB.

Storage

Storage:

Store at 2-8°C. Avoid exposure to light. Stable for one year after shipment.

Storage Buffer:

PBS with 0.09% sodium azide and 0.5% BSA.

For technical support and original validation data for this product please contact:

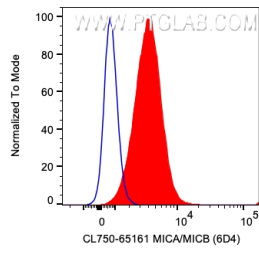
T: 4006900926

E: Proteintech-CN@ptglab.com

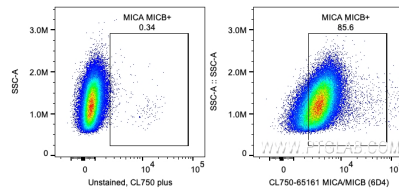
W: ptgcn.com

This product is exclusively available under Proteintech Group brand and is not available to purchase from any other manufacturer.

Selected Validation Data



1X10⁶ HeLa cells were surface stained with 5 ul CoraLite® Plus 750 Anti-Human MICA/MICB (CL750-65161, Clone:6D4). Cells were not fixed.



1X10⁶ HeLa cells were surface stained with 5 ul CoraLite® Plus 750 Anti-Human MICA/MICB (CL750-65161, Clone:6D4). Cells were not fixed.