

For Research Use Only

CoraLite® Plus 750 Anti-Rat CD45RA (OX-33)



Catalog Number: **CL750-65234**

Basic Information

Catalog Number:

CL750-65234

Size:

100ug, 500 µg/ml

Source:

Mouse

Isotype:

IgG1, kappa

GenBank Accession Number:

XM_006249910

GeneID (NCBI):

24699

UNIPROT ID:

P04157

Full Name:

protein tyrosine phosphatase,
receptor type, C

Calculated MW:

143 kDa

Purification Method:

N/A

CloneNo.:

OX-33

Excitation/Emission maxima
wavelengths:

755 nm / 780 nm

Applications

Tested Applications:

FC

Species Specificity:

Rat

Background Information

CD45, also known as protein tyrosine phosphatase, receptor type C, is a type I transmembrane protein expressed on the surface of all haematopoietic cells with the exception of erythrocytes and platelets (PMID: 3489673; 28615666). CD45 is a pan-haematopoietic cell marker and has been shown to be essential for T- and B-cell activation and signalling (PMID: 9429890; 16378097). CD45 exists as multiple isoforms due to alternative splicing of three exons (4, 5, and 6, designated A, B, and C) in the extracellular domain (PMID: 12414720). CD45RA is expressed on naive T cells, B cells, and monocytes (PMID: 1830500; 14687231).

Storage

Storage:

Store at 2-8°C. Avoid exposure to light. Stable for one year after shipment.

Storage Buffer:

PBS with 0.09% sodium azide.

For technical support and original validation data for this product please contact:

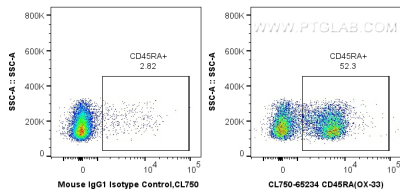
T: 4006900926

E: Proteintech-CN@ptglab.com

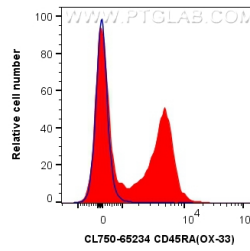
W: ptgcn.com

This product is exclusively available under Proteintech Group brand and is not available to purchase from any other manufacturer.

Selected Validation Data



1X10⁶ rat splenocytes were surface stained with 0.5 ug CoraLite® Plus 750 Anti-Rat CD45RA (CL750-65234, Clone: OX-33), or 0.5 ug CoraLite® Plus 750 Mouse IgG1 Isotype Control (MOPC-21) (CL750-65124, Clone: MOPC-21). Cells were not fixed.



1X10⁶ rat splenocytes were surface stained with 0.5 ug CoraLite® Plus 750 Anti-Rat CD45RA (CL750-65234, Clone: OX-33) (red), or 0.5 ug CoraLite® Plus 750 Mouse IgG1 Isotype Control (MOPC-21) (CL750-65124, Clone: MOPC-21) (blue). Cells were not fixed.