

For Research Use Only

CoraLite® Plus 750 Anti-Human CD64 (10.1) Mouse IgG2a Recombinant Antibody



Catalog Number: **CL750-65572**

Basic Information

Catalog Number: CL750-65572	GenBank Accession Number: BC032634	Purification Method: Protein A purification
Size: 100tests, 5 µl/test	GeneID (NCBI): 2209	CloneNo.: 10.1
Source: Mouse	ENSEMBL Gene ID: ENSG00000150337	Excitation/Emission maxima wavelengths: 755 nm / 780 nm
Isotype: IgG2a	Full Name: Fc fragment of IgG, high affinity Ia, receptor (CD64)	
	Calculated MW: 374 aa, 43 kDa	

Applications

Tested Applications:
FC

Species Specificity:
human

Background Information

Fc γ receptors comprise a multigene family of integral membrane glycoproteins that exhibit complex activation or inhibitory effects on cell functions after aggregation by complexed immunoglobulin G (IgG) (PMID: 17005690). CD64, also known as Fc γ R1A, is a high-affinity receptor for the Fc region of IgG. It is expressed by monocytes/macrophages, activated neutrophils, dendritic cells, and early myeloid cells (PMID: 23293080; 19642859; 7680917). CD64 functions in both innate and adaptive immune responses.

Storage

Storage:
Store at 2-8°C. Avoid exposure to light.

Storage Buffer:
PBS with 0.09% sodium azide and 0.5% BSA.

For technical support and original validation data for this product please contact:

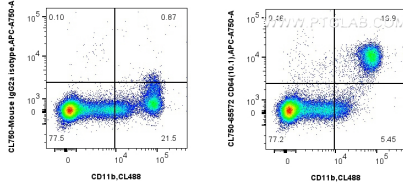
T: 4006900926

E: Proteintech-CN@ptglab.com

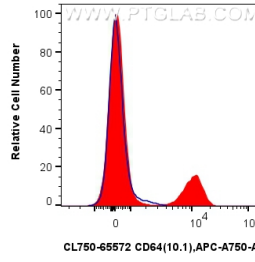
W: ptgcn.com

This product is exclusively available under Proteintech Group brand and is not available to purchase from any other manufacturer.

Selected Validation Data



1x10⁶ human PBMCs were surface stained with CoraLite® Plus 488 Anti-Human CD11b and 5 ul CoraLite® Plus 750 Anti-Human CD64 (10.1) Mouse IgG2a Recombinant Antibody (CL750-65572, Clone: 10.1) (right), or CoraLite® Plus 750 Mouse IgG2a Isotype Control (C1.18.4) (CL750-65208, Clone: C1.18.4) (left). Cells were incubated with FC Receptor Block prior to staining. Cells were not fixed.



1x10⁶ human PBMCs were surface stained with 5 ul CoraLite® Plus 750 Anti-Human CD64 (10.1) Mouse IgG2a Recombinant Antibody (CL750-65572, Clone: 10.1) (red), or CoraLite® Plus 750 Mouse IgG2a Isotype Control (C1.18.4) (CL750-65208, Clone: C1.18.4) (blue). Cells were incubated with FC Receptor Block prior to staining. Cells were not fixed.