

For Research Use Only

CoraLite® Plus 750 Anti-Human CD226 (11A8) Mouse IgG2a Recombinant Antibody



Catalog Number: **CL750-65573**

Basic Information

Catalog Number: CL750-65573	GenBank Accession Number: BC074787	Purification Method: Protein A purification
Size: 100tests, 5 µl/test	GeneID (NCBI): 10666	CloneNo.: 11A8
Source: Mouse	ENSEMBL Gene ID: ENSG00000150637	Excitation/Emission maxima wavelengths: 755 nm / 780 nm
Isotype: IgG2a	Full Name: CD226 molecule	
	Calculated MW: 336 aa, 39 kDa	

Applications

Tested Applications:
FC

Species Specificity:
human

Background Information

CD226 (DNAM-1) is a ~65 kDa glycoprotein expressed on the surface of NK cells, platelets, monocytes and a subset of T cells. It is a member of the Ig-superfamily containing 2 Ig-like domains of the V-set. CD226 mediates cellular adhesion of platelets and megakaryocytic cells to vascular endothelial cells. The protein also plays a role in megakaryocytic cell maturation. Interactions of CD226 and its ligands, CD155 and CD112, induce NK and T cell-mediated cytotoxicity and cytokine secretion (PMID: 15039383).

Storage

Storage:
Store at 2-8°C. Avoid exposure to light.

Storage Buffer:
PBS with 0.09% sodium azide and 0.5% BSA.

For technical support and original validation data for this product please contact:

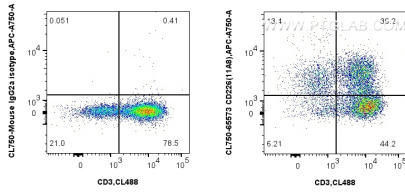
T: 4006900926

E: Proteintech-CN@ptglab.com

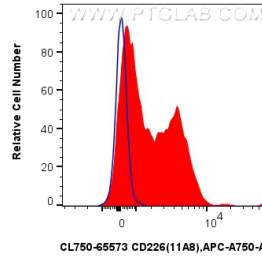
W: ptgcn.com

This product is exclusively available under Proteintech Group brand and is not available to purchase from any other manufacturer.

Selected Validation Data



1x10⁶ human PBMCs were surface stained with CoraLite® Plus 488 Anti-Human CD3 and 5 ul CoraLite® Plus 750 Anti-Human CD226 (11A8) Mouse IgG2a Recombinant Antibody (CL750-65573, Clone: 11A8) (right), or CoraLite® Plus 750 Mouse IgG2a Isotype Control (C1.18.4) (CL750-65208, Clone: C1.18.4) (left). Cells were not fixed. Lymphocytes were gated.



1x10⁶ human PBMCs were surface stained with 5 ul CoraLite® Plus 750 Anti-Human CD226 (11A8) Mouse IgG2a Recombinant Antibody (CL750-65573, Clone: 11A8) (red), or CoraLite® Plus 750 Mouse IgG2a Isotype Control (C1.18.4) (CL750-65208, Clone: C1.18.4) (blue). Cells were not fixed. Lymphocytes were gated.