

For Research Use Only

CoraLite® Plus 750 Anti-Human CD29 (TS2/16) Mouse IgG2a Recombinant Antibody



Catalog Number: **CL750-65601**

Basic Information

| | | |
|---------------------------------------|---|---|
| Catalog Number: CL750-65601 | GenBank Accession Number: BC020057 | Purification Method: Protein A purification |
| Size: 100tests, 5 µl/test | GeneID (NCBI): 3688 | CloneNo.: TS2/16 |
| Source: Mouse | ENSEMBL Gene ID: ENSG00000150093 | Excitation/Emission maxima wavelengths: 755 nm / 780 nm |
| Isotype: IgG2a | Full Name: integrin, beta 1 (fibronectin receptor, beta polypeptide, antigen CD29 includes MDF2, MSK12) | |
| | Calculated MW: 88 kDa | |

Applications

Tested Applications:
FC

Species Specificity:
human

Background Information

Integrin beta-1 (ITGB1), also named as CD29, is a 130 kDa single chain type I glycoprotein that is expressed in a heterodimeric complex with one of six distinct α subunits, comprising the very late activation antigen (VLA) subfamily of adhesion receptors. It is one of the essential surface molecules expressed on human MSC from bone marrow and other sources. The β 1 subunit is also broadly expressed on lymphocytes and monocytes, weakly expressed on granulocytes, and not expressed on erythrocytes. These receptors are involved in a variety of cell-cell and cell-matrix interactions.

Storage

Storage:
Store at 2-8°C. Avoid exposure to light.
Storage Buffer:
PBS with 0.09% sodium azide and 0.5% BSA.

For technical support and original validation data for this product please contact:

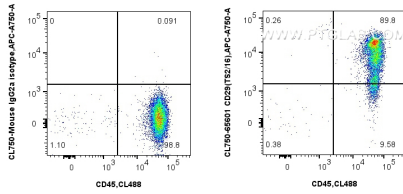
T: 4006900926

E: Proteintech-CN@ptglab.com

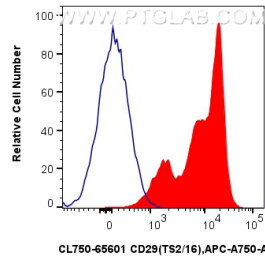
W: ptgcn.com

This product is exclusively available under Proteintech Group brand and is not available to purchase from any other manufacturer.

Selected Validation Data



1x10⁶ human PBMCs were surface stained with CoraLite® Plus 488 Anti-Human CD45 and 5 ul CoraLite® Plus 750 Anti-Human CD29 (TS2/16) Mouse IgG2a Recombinant Antibody (CL750-65601, Clone: TS2/16) (right), or CoraLite® Plus 750 Mouse IgG2a Isotype Control (C1.18.4) (CL750-65208, Clone: C1.18.4) (left). Cells were incubated with FC Receptor Block prior to staining. Cells were not fixed.



1x10⁶ human PBMCs were surface stained with 5 ul CoraLite® Plus 750 Anti-Human CD29 (TS2/16) Mouse IgG2a Recombinant Antibody (CL750-65601, Clone: TS2/16)(red), or CoraLite® Plus 750 Mouse IgG2a Isotype Control (C1.18.4) (CL750-65208, Clone: C1.18.4) (blue). Cells were incubated with FC Receptor Block prior to staining. Cells were not fixed.