

For Research Use Only

CoraLite® Plus 750 Anti-Rat CD11b (OX42) Mouse IgG2a Recombinant Antibody



Catalog Number: **CL750-65606**

Basic Information

Catalog Number: CL750-65606	GenBank Accession Number: NM_012711	Purification Method: Protein A purification
Size: 100ug, 500 µg/ml	GeneID (NCBI): 25021	CloneNo.: OX42
Source: Mouse	Full Name: integrin alpha M	Excitation/Emission maxima wavelengths: 755 nm / 780 nm
Isotype: IgG2a	Calculated MW: 127 kDa	

Applications

Tested Applications:

FC

Species Specificity:

rat

Background Information

Integrins are cell adhesion receptors that are heterodimers composed of non-covalently associated α and β subunits (PMID: 9779984). CD11b, also known as Integrin alpha M or CR3A, belongs to the integrin alpha chain family. CD11b forms an α / β heterodimer with CD18 (integrin β 2). CD11b/CD18 is implicated in various adhesive interactions of monocytes, macrophages and granulocytes as well as in mediating the uptake of complement-coated particles and pathogens (PMID: 9558116; 20008295). CD11b/CD18 is a receptor for the complement protein fragment iC3b, and is also a receptor for fibrinogen, factor X and ICAM1 (PMID: 2971974; 15485828).

Storage

Storage:

Store at 2-8°C. Avoid exposure to light.

Storage Buffer:

PBS with 0.09% sodium azide.

For technical support and original validation data for this product please contact:

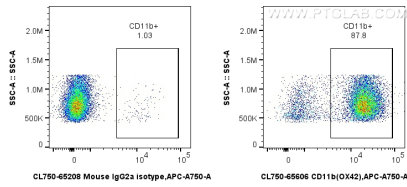
T: 4006900926

E: Proteintech-CN@ptglab.com

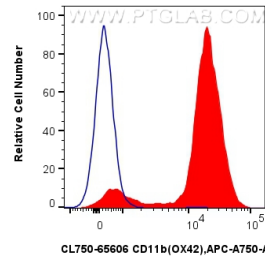
W: ptgcn.com

This product is exclusively available under Proteintech Group brand and is not available to purchase from any other manufacturer.

Selected Validation Data



1×10^6 rat bone marrow cells were surface stained with 0.25 μ g CoraLite® Plus 750 Anti-Rat CD11b (OX42) Mouse IgG2a Recombinant Antibody (CL750-65606, Clone: OX42), or CoraLite® Plus 750 Mouse IgG2a Isotype Control (C1.18.4) (CL750-65208, Clone: C1.18.4). Cells were not fixed.



1×10^6 rat bone marrow cells were surface stained with 0.25 μ g CoraLite® Plus 750 Anti-Rat CD11b (OX42) Mouse IgG2a Recombinant Antibody (CL750-65606, Clone: OX42) (red), or CoraLite® Plus 750 Mouse IgG2a Isotype Control (C1.18.4) (CL750-65208, Clone: C1.18.4) (blue). Cells were not fixed.