

For Research Use Only

# CoraLite® Plus 750-conjugated Talin-1 Monoclonal antibody



Catalog Number: CL750-67992

## Basic Information

<b>Catalog Number:</b> CL750-67992	<b>GenBank Accession Number:</b> BC042923	<b>Purification Method:</b> Protein G purification
<b>Size:</b> 1000 µg/ml	<b>GeneID (NCBI):</b> 7094	<b>CloneNo.:</b> 2E12D10
<b>Source:</b> Mouse	<b>UNIPROT ID:</b> Q9Y490	<b>Excitation/Emission maxima wavelengths:</b> 755 nm / 780 nm
<b>Isotype:</b> IgG1	<b>Full Name:</b> talin 1	
<b>Immunogen Catalog Number:</b> AG5937	<b>Calculated MW:</b> 2541 aa, 270 kDa	
	<b>Observed MW:</b> 270 kDa	

## Applications

**Tested Applications:**  
FC (Intra)

**Species Specificity:**  
Human

## Background Information

Talin-1 is a large cytoskeletal protein consisting of a globular head domain and a long rod comprised of a series of  $\alpha$ -helical bundles (PMID: 35266014). Talin-1 is ubiquitously expressed and is a major component of focal adhesions which are multi-protein, integrin-containing complexes, mediating cell migration, adhesion and integrin signalling (PMID: 33431906). Talin-1 also plays a role in tumor formation, migration and metastasis in various malignancies (PMID: 37013489).

## Storage

**Storage:**  
Store at -20°C. Avoid exposure to light. Stable for one year after shipment.

**Storage Buffer:**  
PBS with 50% Glycerol, 0.05% Proclin300, 0.5% BSA, pH 7.3.

Aliquoting is unnecessary for -20°C storage

For technical support and original validation data for this product please contact:

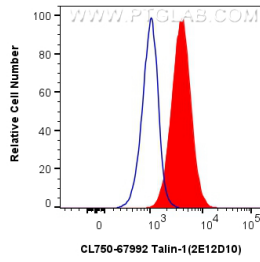
T: 4006900926

E: [Proteintech-CN@ptglab.com](mailto:Proteintech-CN@ptglab.com)

W: [ptgcn.com](http://ptgcn.com)

This product is exclusively available under Proteintech Group brand and is not available to purchase from any other manufacturer.

## Selected Validation Data



1x10<sup>6</sup> HeLa cells were intracellularly stained with 0.8 ug CoraLite® Plus 750 Anti-Human Talin-1 (CL750-67992, Clone:2E12D10) (red), or 0.8 ug CoraLite® Plus 750 Mouse IgG1 Isotype Control (MOPC-21) (CL750-65124, Clone: MOPC-21) (blue). Cells were fixed with 4% PFA and permeabilized with Flow Cytometry Perm Buffer (PF00011-C).