

For Research Use Only

CoraLite® Plus 750-conjugated STIM1 Recombinant antibody



Catalog Number: CL750-81156

Basic Information

| | | |
|--------------------------------------------|-----------------------------------------------------|-----------------------------------------------------------------------|
| Catalog Number: CL750-81156 | GenBank Accession Number: BC021300 | Purification Method: Protein A purification |
| Size: 1000 µg/ml | GeneID (NCBI): 6786 | CloneNo.: 1B13 |
| Source: Rabbit | UNIPROT ID: Q13586 | Recommended Dilutions: WB 1:500-1:2000 |
| Isotype: IgG | Full Name: stromal interaction molecule 1 | Excitation/Emission maxima wavelengths: 755 nm / 780 nm |
| Immunogen Catalog Number: AG2140 | Calculated MW: 685 aa, 77 kDa | |
| | Observed MW: 77 kDa | |

Applications

| | |
|--------------------------------------------------|--------------------------------------------------------------------------------|
| Tested Applications: WB | Positive Controls: WB : NIH/3T3 cells, RAW 264.7 cells, HSC-T6 cells |
| Species Specificity: Human, mouse, rat | |

Background Information

STIM1, also named as GOK, is an ER Ca²⁺ sensor. Upon Ca²⁺ store depletion, STIM1 clusters at ER-plasma membrane junctions where it interacts with and gates Ca²⁺-permeable Orai1 ion channels. STIM1 is implicated in tumor growth suppression and stromal-haematopoietic cell interactions. Defects in STIM1 gene can cause immune dysfunction with impaired T-cell activation. STIM1 can inhibit L-type voltage-gated Ca(2+) channels in neurons. Temperature is an important regulator of STIM1 function.

Storage

Storage:
Store at -20°C. Avoid exposure to light. Stable for one year after shipment.
Storage Buffer:
PBS with 50% Glycerol, 0.05% Proclin300, 0.5% BSA, pH 7.3.
Aliquoting is unnecessary for -20°C storage

For technical support and original validation data for this product please contact:

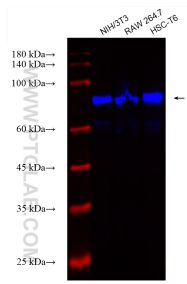
T: 4006900926

E: Proteintech-CN@ptglab.com

W: ptgcn.com

This product is exclusively available under Proteintech Group brand and is not available to purchase from any other manufacturer.

Selected Validation Data



Various lysates were subjected to SDS PAGE followed by western blot with CL750-81156 (STIM1 antibody) at dilution of 1:1000 incubated at room temperature for 1.5 hours.