

For Research Use Only

CoraLite® Plus 750-conjugated Caspase 1 Recombinant antibody



Catalog Number: CL750-81482

Basic Information

| | | |
|---|--|---|
| Catalog Number: CL750-81482 | GenBank Accession Number: BC062327 | Purification Method: Protein A purification |
| Size: 1000 µg/ml | GeneID (NCBI): 834 | CloneNo.: 1018 |
| Source: Rabbit | UNIPROT ID: P29466 | Recommended Dilutions: WB 1:500-1:2000 |
| Isotype: IgG | Full Name: caspase 1, apoptosis-related cysteine peptidase (interleukin 1, beta, convertase) | Excitation/Emission maxima wavelengths: 755 nm / 780 nm |
| Immunogen Catalog Number: AG11143 | Calculated MW: 404 aa, 45 kDa | |
| | Observed MW: 30 kDa, 35 kDa, 43-45 kDa | |

Applications

| | |
|--------------------------------------|---|
| Tested Applications: WB | Positive Controls: WB: THP-1 cells, U-937 cells |
| Species Specificity: human | |

Background Information

CASP1(caspase-1) is also named as IL1BC, IL1BCE and belongs to the peptidase C14A family. It is a cysteine protease that regulates inflammatory processes through its capacity to process and activate the interleukin-1-beta (IL1B), IL18, and IL33 precursor proteins. The active caspase-1 can increase cellular membrane permeability and intracellular calcium levels, which facilitates lysosome exocytosis and release of host antimicrobial factors and microbial products (PMID:21804020). It has 5 isoforms produced by alternative splicing. 81482-1-RR can recognize the splicing isoforms of caspase 1.

Storage

Storage:
Store at -20°C. Avoid exposure to light. Stable for one year after shipment.
Storage Buffer:
PBS with 50% Glycerol, 0.05% Proclin300, 0.5% BSA, pH 7.3.
Aliquoting is unnecessary for -20°C storage

For technical support and original validation data for this product please contact:

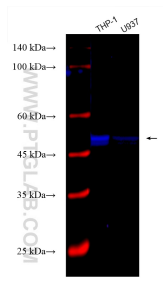
T: 4006900926

E: Proteintech-CN@ptglab.com

W: ptgcn.com

This product is exclusively available under Proteintech Group brand and is not available to purchase from any other manufacturer.

Selected Validation Data



Various lysates were subjected to SDS PAGE followed by western blot with CL750-81482 (Caspase 1 antibody) at dilution of 1:1000 incubated at room temperature for 1.5 hours.