

For Research Use Only

CoraLite® Plus 750-conjugated HLA-DMA Recombinant antibody

Catalog Number:CL750-82899-2



Basic Information

Catalog Number:

CL750-82899-2

Size:

1000 µg/ml

Source:

Rabbit

Isotype:

IgG

Immunogen Catalog Number:

AG2452

GenBank Accession Number:

BC026279

GeneID (NCBI):

3108

UNIPROT ID:

Q31604

Full Name:

major histocompatibility complex, class II, DM alpha

Calculated MW:

261 aa, 29 kDa

Observed MW:

30 kDa

Purification Method:

Protein A purification

CloneNo.:

230155E7

Recommended Dilutions:

WB 1:500-1:1000

Excitation/Emission maxima wavelenghts:

755 nm / 780 nm

Applications

Tested Applications:

WB

Species Specificity:

human

Positive Controls:

WB : Raji cells, Ramos cells

Background Information

Human major histocompatibility complex (MHC) antigens, also referred to as human leukocyte antigens (HLA), are encoded by genes located on the short arm of chromosome 6 (6p21.3). There are two classes of HLA antigens: class I (HLA-A, B and C) and class II (HLA-D). The class II molecules are composed of two non-covalently associated alpha and beta chains. HLA-DMA and HLA-DMB form a functional heterodimer that is critical in the pathway of class II antigen presentation. HLA-DM plays a critical role in catalyzing the release of Class II HLA-associated invariant chain-derived peptides (CLIP) from newly synthesized class II HLA molecules and freeing the peptide binding site for acquisition of antigenic peptides.

Storage

Storage:

Store at -20°C. Avoid exposure to light. Stable for one year after shipment.

Storage Buffer:

PBS with 50% Glycerol, 0.05% Proclin300, 0.5% BSA, pH 7.3.

Aliquoting is unnecessary for -20°C storage

For technical support and original validation data for this product please contact:

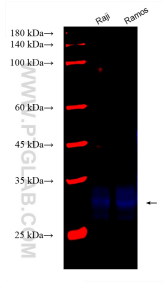
T: 4006900926

E: Proteintech-CN@ptglab.com

W: ptgcn.com

This product is exclusively available under Proteintech Group brand and is not available to purchase from any other manufacturer.

Selected Validation Data



Various lysates were subjected to SDS PAGE followed by western blot with CL750-82899-2 (HLA-DMA antibody) at dilution of 1:800 incubated at room temperature for 1.5 hours.