

For Research Use Only

CoraLite® Plus 750-conjugated KIF15 Recombinant antibody

Catalog Number:CL750-82903



Basic Information

Catalog Number:

CL750-82903

Size:

1000 µg/ml

Source:

Rabbit

Isotype:

IgG

Immunogen Catalog Number:

AG33897

GenBank Accession Number:

NM_020242

GeneID (NCBI):

56992

UNIPROT ID:

Q9NS87

Full Name:

kinesin family member 15

Calculated MW:

160 kDa

Observed MW:

160 kDa

Purification Method:

Protein A purification

CloneNo.:

230049F1

Recommended Dilutions:

WB 1:500-1:2000

Excitation/Emission maxima
wavelengths:

755 nm / 780 nm

Applications

Tested Applications:

WB

Species Specificity:

human

Positive Controls:

WB : HeLa cells, HepG2 cells, K-562 cells

Background Information

KIF15, also named as KLP2 and KNSL7, belongs to the kinesin-like protein family and KLP2 subfamily. It is a plus-end directed kinesin-like motor enzyme which involved in mitotic spindle assembly. Several isoforms of KIF15 exist due to the alternative splicing, with molecular weight between 130-160 kDa. Sometimes higher molecular weight around 200 kDa can also be observed, which may be a modified variant of KIF15. (14618103)

Storage

Storage:

Store at -20°C. Avoid exposure to light. Stable for one year after shipment.

Storage Buffer:

PBS with 50% Glycerol, 0.05% Proclin300, 0.5% BSA, pH 7.3.

Aliquoting is unnecessary for -20°C storage

For technical support and original validation data for this product please contact:

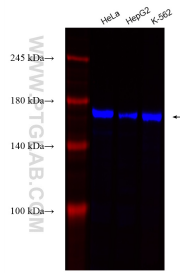
T: 4006900926

E: Proteintech-CN@ptglab.com

W: ptgcn.com

This product is exclusively available under Proteintech Group brand and is not available to purchase from any other manufacturer.

Selected Validation Data



Various lysates were subjected to SDS PAGE followed by western blot with CL750-82903 (KIF15 antibody) at dilution of 1:1000 incubated at room temperature for 1.5 hours.