

For Research Use Only

CoraLite® Plus 750-conjugated SLC25A5 Recombinant antibody



Catalog Number: CL750-83104

Basic Information

Catalog Number: CL750-83104	GenBank Accession Number: BC056160	Purification Method: Protein A purification
Size: 1000 µg/ml	GeneID (NCBI): 292	CloneNo.: 230247B1
Source: Rabbit	UNIPROT ID: P05141	Recommended Dilutions: WB 1:500-1:1000
Isotype: IgG	Full Name: solute carrier family 25 (mitochondrial carrier; adenine nucleotide translocator), member 5	Excitation/Emission maxima wavelengths: 755 nm / 780 nm
Immunogen Catalog Number: AG11956	Calculated MW: 298 aa, 33 kDa	
	Observed MW: 32 kDa	

Applications

Tested Applications: WB	Positive Controls: WB : C6 cells, rat liver tissue, mouse liver tissue, Neuro-2a cells
Species Specificity: human, mouse, rat	

Background Information

Adenine nucleotide translocators (ANTs) are mitochondrial carrier proteins that exchange ATP and ADP between the cytoplasm and the mitochondrial matrix. Four isoforms of ANT were identified: ANT1 (encoded by SLC25A4) is highly expressed in different tissues; ANT2 (encoded by SLC25A5) is predominantly expressed in proliferating, regenerating, or undifferentiated cells; ANT3 is ubiquitously expressed; ANT4 is mainly expressed in testis and germ cells. This antibody recognizes both of ANT1 and ANT2. The predicted molecular weight of ANT1/2 protein is around 32 kDa. While 60 kDa protein can also be observed, which has been proposed as the dimer of ANT1/2. (22423112)

Storage

Storage:
Store at -20°C. Avoid exposure to light.
Storage Buffer:
PBS with 50% Glycerol, 0.05% Proclin300, 0.5% BSA, pH 7.3.
Aliquoting is unnecessary for -20°C storage

For technical support and original validation data for this product please contact:

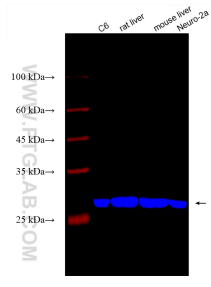
T: 4006900926

E: Proteintech-CN@ptglab.com

W: ptgcn.com

This product is exclusively available under Proteintech Group brand and is not available to purchase from any other manufacturer.

Selected Validation Data



Various lysates were subjected to SDS PAGE followed by western blot with CL750-83104 (SLC25A5 antibody) at dilution of 1:800 incubated at room temperature for 1.5 hours.