

For Research Use Only

CoraLite® Plus 750-conjugated MDM1 Recombinant antibody



Catalog Number: CL750-83141-2

Basic Information

Catalog Number:

CL750-83141-2

Size:

1000 µg/ml

Source:

Rabbit

Isotype:

IgG

Immunogen Catalog Number:

AG10541

GenBank Accession Number:

BC028355

GeneID (NCBI):

56890

UNIPROT ID:

Q8TC05

Full Name:

Mdm1 nuclear protein homolog
(mouse)

Calculated MW:

81 kDa

Observed MW:

102 kDa

Purification Method:

Protein A purification

CloneNo.:

230425E10

Recommended Dilutions:

WB 1:500-1:1000

Excitation/Emission maxima
wavelengths:

755 nm / 780 nm

Applications

Tested Applications:

WB

Species Specificity:

human, mouse

Positive Controls:

WB : Raji cells, HEK-293 cells

Background Information

Mdm1 was upregulated during ciliogenesis in multiciliated tracheal epithelial cells and localized to centrioles and cilia when transfected into NIH/3T3 cells. Mdm1 is a microtubule-binding protein that inhibits centrosome duplication when overexpressed. Proteomic analysis revealed that Mdm1 was also detected in the mouse photoreceptor sensory cilium complex and the outer segment (OS) of photoreceptor cells in the retina, suggesting that Mdm1 might be involved in the regulation of the functions and structure of the centrosome, as well as cilia. (PMID: 36171205)

Storage

Storage:

Store at -20°C. Avoid exposure to light. Stable for one year after shipment.

Storage Buffer:

PBS with 50% Glycerol, 0.05% Proclin300, 0.5% BSA, pH 7.3.

Aliquoting is unnecessary for -20°C storage

For technical support and original validation data for this product please contact:

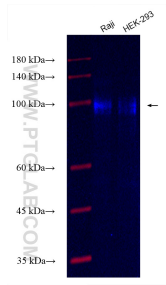
T: 4006900926

E: Proteintech-CN@ptglab.com

W: ptgcn.com

This product is exclusively available under Proteintech Group brand and is not available to purchase from any other manufacturer.

Selected Validation Data



Various lysates were subjected to SDS PAGE followed by western blot with CL750-83141-2 (MDM1 antibody) at dilution of 1:500 incubated at room temperature for 1.5 hours.