

For Research Use Only

CoraLite® Plus 750-conjugated Cytochrome c Recombinant antibody

Catalog Number: CL750-83276

Featured Product



Basic Information

Catalog Number:

CL750-83276

Size:

1000 ug/ml

Source:

Rabbit

Isotype:

IgG

Immunogen Catalog Number:

AG1455

GenBank Accession Number:

BC009578

GeneID (NCBI):

54205

UNIPROT ID:

P99999

Full Name:

cytochrome c, somatic

Calculated MW:

12 kDa

Observed MW:

12-15 kDa

Purification Method:

Protein A purification

CloneNo.:

230503E10

Recommended Dilutions:

WB 1:500-1:1000

Excitation/Emission maxima
wavelengths:

755 nm / 780 nm

Applications

Tested Applications:

WB, FC (Intra)

Species Specificity:

human, mouse

Positive Controls:

WB : Jurkat cells, HepG2 cells

Background Information

Cytochrome c is a 12-15 kDa electron transporting protein located in the inner mitochondrial membrane. As a part of respiratory chain, cytochrome c plays a critical role in the process of oxidative phosphorylation and ATP producing. Besides, cytochrome c also gets implicated in apoptosis process. Upon apoptotic stimulation, cytochrome c can be released from mitochondria into cytoplasm, which is required for caspase-3 activation and the occurrence of apoptosis.

Storage

Storage:

Store at -20°C. Avoid exposure to light. Stable for one year after shipment.

Storage Buffer:

PBS with 50% Glycerol, 0.05% Proclin300, 0.5% BSA, pH 7.3.

Aliquoting is unnecessary for -20°C storage

For technical support and original validation data for this product please contact:

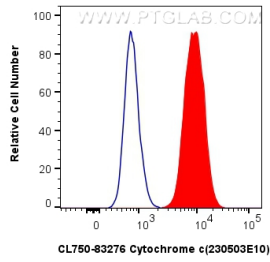
T: 4006900926

E: Proteintech-CN@ptglab.com

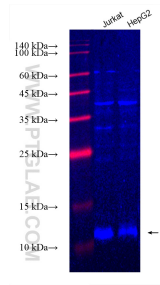
W: ptgcn.com

This product is exclusively available under Proteintech Group brand and is not available to purchase from any other manufacturer.

Selected Validation Data



1x10⁶ HepG2 cells were intracellularly stained with 0.8 ug Coralite® Plus 750 Cytochrome C Recombinant Antibody (CL750-83276, Clone:230503E10)(red), or 0.8 ug Isotype Control (blue). Cells were fixed with 4% PFA and permeabilized with Flow Cytometry Perm Buffer (PF00011-C).



Various lysates were subjected to SDS PAGE followed by western blot with CL750-83276 (Cytochrome c antibody) at dilution of 1:500 incubated at room temperature for 1.5 hours.