

For Research Use Only

CoraLite® Plus 750 Anti-Human Endoglin/CD105 Rabbit Recombinant Antibody



Catalog Number: **CL750-98013**

Basic Information

Catalog Number: CL750-98013	GenBank Accession Number: BC014271	Purification Method: Protein A purification
Size: 100tests, 5 ul/test	GeneID (NCBI): 2022	CloneNo.: 230047E5
Source: Rabbit	UNIPROT ID: P17813	Excitation/Emission maxima wavelengths: 755 nm / 780 nm
Isotype: IgG	Full Name: endoglin	
	Calculated MW: 71 kDa	

Applications

Tested Applications:
FC

Species Specificity:
human

Background Information

Endoglin (ENG, CD105) is a homodimeric cell membrane glycoprotein of 180 kDa, composed of disulphide-linked subunits of 90-95 kDa. Endoglin is a proliferation-associated and hypoxia-inducible protein mainly expressed on vascular endothelial cells. It acts as an accessory receptor for transforming growth factor beta (TGF- β) and is involved in vascular development and remodeling. The important role of Endoglin in angiogenesis and in tumor progression makes it an ideal target for antiangiogenic therapy and a good marker for tumor prognosis. (PMID: 1326540; 14528280; 21737653; 12773481)

Storage

Storage:
Store at 2-8°C. Avoid exposure to light.

Storage Buffer:
PBS with 0.09% sodium azide and 0.5% BSA.

For technical support and original validation data for this product please contact:

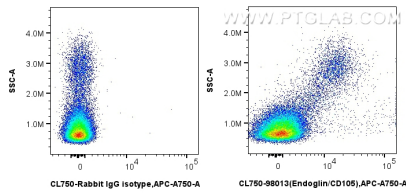
T: 4006900926

E: Proteintech-CN@ptglab.com

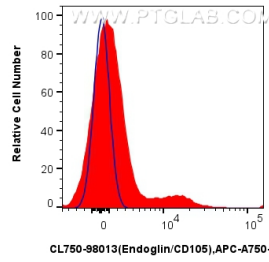
W: ptgcn.com

This product is exclusively available under Proteintech Group brand and is not available to purchase from any other manufacturer.

Selected Validation Data



1x10⁶ human PBMCs were surface stained with 5 ul CoraLite® Plus 750 Anti-Human Endoglin/CD105 Rabbit Recombinant Antibody (CL750-98013, Clone:230047E5), or Isotype Control. Cells were incubated with FC Receptor Block prior to staining. Cells were not fixed.



1x10⁶ human PBMCs were surface stained with 5 ul CoraLite® Plus 750 Anti-Human Endoglin/CD105 Rabbit Recombinant Antibody (CL750-98013, Clone:230047E5)(red), or Isotype Control (blue). Cells were incubated with FC Receptor Block prior to staining. Cells were not fixed.