

For Research Use Only

CoraLite® Plus 750 Anti-Mouse CD86 Rabbit Recombinant Antibody



Catalog Number: CL750-98025

Basic Information

Catalog Number: CL750-98025	GenBank Accession Number: NM_019388	Purification Method: Protein A purification
Size: 100ug, 500 µg/ml	GeneID (NCBI): 12524	CloneNo.: 230476B8
Source: Rabbit	UNIPROT ID: P42082-1	Excitation/Emission maxima wavelengths: 755 nm / 780 nm
Isotype: IgG	Full Name: CD86 antigen	
	Calculated MW: 35 kDa	

Applications

Tested Applications:
FC

Species Specificity:
mouse

Background Information

CD86 (also known as B7-2) is a costimulatory molecule belonging to the immunoglobulin superfamily. Primarily expressed on antigen-presenting cells (APCs), including B cells, dendritic cells, and macrophages, CD86 is the ligand for two proteins at the cell surface of T cells, CD28 antigen and CTLA-4. Binding of CD86 with CD28 antigen is a costimulatory signal for activation of the T-cell. Binding of CD86 with CTLA-4 negatively regulates T-cell activation and diminishes the immune response. (PMID: 7513726; 1847722; 11029388; 27591335)

Storage

Storage:
Store at 2-8°C. Avoid exposure to light.

Storage Buffer:
PBS with 0.09% sodium azide.

For technical support and original validation data for this product please contact:

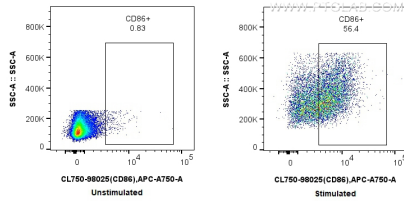
T: 4006900926

E: Proteintech-CN@ptglab.com

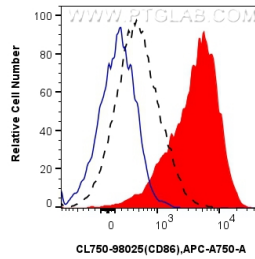
W: ptgcn.com

This product is exclusively available under Proteintech Group brand and is not available to purchase from any other manufacturer.

Selected Validation Data



1x10⁶ untreated or LPS-treated mouse splenocytes were surface stained with 0.25 ug CoraLite® Plus 750 Anti-Mouse CD86 Rabbit Recombinant Antibody (CL750-98025, Clone:230476B8). Cells were not fixed.



1x10⁶ LPS treated mouse splenocytes were surface stained with 0.25 ug CoraLite® Plus 750 Anti-Mouse CD86 Rabbit Recombinant Antibody (CL750-98025, Clone: 230476B8) (red), or 0.25 ug Isotype Control (blue). 1x10⁶ untreated mouse splenocytes were surface stained with 0.25 ug CoraLite® Plus 750 Anti-Mouse CD86 Rabbit Recombinant Antibody (CL750-98025, Clone: 230476B8) (black, dashed). Cells were not fixed.