

For Research Use Only

# CoraLite® Plus 750 Anti-Mouse MCP-1/CCL2 Rabbit Recombinant Antibody

Catalog Number:CL750-98028



## Basic Information

<b>Catalog Number:</b> CL750-98028	<b>GenBank Accession Number:</b> NM-011333	<b>Purification Method:</b> Protein A purification
<b>Size:</b> 100ug, 500 ug/ml	<b>GeneID (NCBI):</b> 20296	<b>CloneNo.:</b> 230483A9
<b>Source:</b> Rabbit	<b>UNIPROT ID:</b> P10148	<b>Excitation/Emission maxima wavelengths:</b> 755 nm / 780 nm
<b>Isotype:</b> IgG	<b>Full Name:</b> chemokine (C-C motif) ligand 2	

## Applications

**Tested Applications:**  
FC (Intra)

**Species Specificity:**  
mouse

## Background Information

Monocyte chemoattractant protein 1 (MCP-1; also known as CCL2), is chemotactic for monocyte/macrophage, B-cell, and T-lymphocyte, and belongs to the CC subfamily of chemokines. Chemokines are a superfamily of secreted proteins involved in immunoregulatory and inflammatory processes. The human ortholog has been implicated in the pathogenesis of diseases characterized by monocytic infiltrates, such as psoriasis, rheumatoid arthritis, and atherosclerosis.

## Storage

**Storage:**  
Store at 2-8°C. Avoid exposure to light. Stable for one year after shipment.

**Storage Buffer:**  
PBS with 0.09% sodium azide.

For technical support and original validation data for this product please contact:

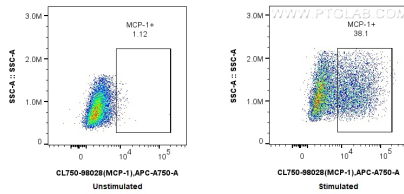
T: 4006900926

E: [Proteintech-CN@ptglab.com](mailto:Proteintech-CN@ptglab.com)

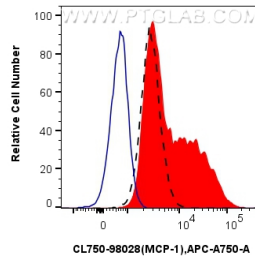
W: [ptgcn.com](http://ptgcn.com)

**This product is exclusively available under Proteintech Group brand and is not available to purchase from any other manufacturer.**

## Selected Validation Data



1x10<sup>6</sup> untreated or LPS and Brefeldin A treated RAW 264.7 cells were intracellularly stained with 0.25 ug CoraLite® Plus 750 Anti-Mouse MCP-1 Rabbit Recombinant Antibody (CL750-98028, Clone:230483A9). Cells were fixed with 4% PFA and permeabilized with Flow Cytometry Perm Buffer (PF00011-C).



1x10<sup>6</sup> LPS and Brefeldin A treated RAW 264.7 cells were intracellularly stained with 0.25 ug CoraLite® Plus 750 Anti-Mouse MCP-1 Rabbit Recombinant Antibody (CL750-98028, Clone: 230483A9) (red) or Isotype Control (blue). 1x10<sup>6</sup> untreated RAW 264.7 cells were intracellularly stained with 0.25 ug CoraLite® Plus 750 Anti-Mouse MCP-1 Rabbit Recombinant Antibody (CL750-98028, Clone: 230483A9) (black, dashed). Cells were fixed with 4% PFA and permeabilized with Flow