

For Research Use Only

CoraLite® Plus 750-conjugated PD-L1/CD274 Recombinant antibody

Catalog Number: CL750-98166



Basic Information

Catalog Number:

CL750-98166

Size:

100ug, 500 µg/ml

Source:

Rabbit

Isotype:

IgG

GenBank Accession Number:

NM_021893.3

GeneID (NCBI):

60533

UNIPROT ID:

Q9EP73

Full Name:

CD274 antigen

Calculated MW:

33 kDa

Purification Method:

Protein A purification

CloneNo.:

240993E1

Excitation/Emission maxima
wavelengths:

755 nm / 780 nm

Applications

Tested Applications:

FC

Species Specificity:

mouse

Background Information

Programmed cell death ligand 1 (PD-L1, CD274, or B7-H1), is the first member of B7 family to be discovered. B7 family molecules are type I transmembrane proteins belonging to the immunoglobulin superfamily. In concert with their CD28 family receptors, the B7s are key regulators of the adaptive immune response. PD-L1 is suggested as a negative regulator of T and B cell, and plays important role in mediating tolerance of lymphocytes to self-antigens. It is also involved in the costimulatory signal, essential for T-cell proliferation and production of IL10 and IFNG, in an IL2-dependent and a PD-1-independent manner.

Storage

Storage:

Store at 2-8°C. Avoid exposure to light. Stable for one year after shipment.

Storage Buffer:

PBS with 0.09% sodium azide and 0.5% BSA.

For technical support and original validation data for this product please contact:

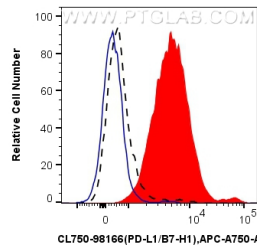
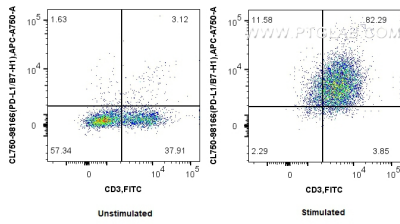
T: 4006900926

E: Proteintech-CN@ptglab.com

W: ptgcn.com

This product is exclusively available under Proteintech Group brand and is not available to purchase from any other manufacturer.

Selected Validation Data



1x10⁶ untreated or anti-CD3/CD28 treated mouse splenocytes were surface stained with FITC Plus Anti-Mouse CD3 and 0.25 ug CoraLite® Plus 750 Anti-Mouse PD-L1/CD274 Rabbit Recombinant Antibody (CL750-98166, Clone:240993E1). Cells were not fixed.

1x10⁶ anti-CD3/CD28 treated mouse splenocytes were surface stained with 0.25 ug CoraLite® Plus 750 Anti-Mouse PD-L1/CD274 Rabbit Recombinant Antibody (CL750-98166, Clone:240993E1) (red) or CoraLite® Plus 750 Rabbit IgG Isotype Control Recombinant Antibody (CL750-98136, Clone: 240953C9) (blue). 1x10⁶ untreated mouse splenocytes were surface stained with 0.25 ug CoraLite® Plus 750 Anti-Mouse PD-L1/CD274 Rabbit Recombinant Antibody (CL750-98166,

