

For Research Use Only

CoraLite® Plus 750 Anti-Mouse CD24 Rabbit Recombinant Antibody

Catalog Number:CL750-98176



Basic Information

Catalog Number:

CL750-98176

Size:

100ug, 500 µg/ml

Source:

Rabbit

Isotype:

IgG

GenBank Accession Number:

NM_009846.2

GeneID (NCBI):

12484

UNIPROT ID:

P24807

Full Name:

CD24a antigen

Calculated MW:

8kDa

Purification Method:

Protein A purification

CloneNo.:

241691D7

Excitation/Emission maxima wavelengths:

755 nm / 780 nm

Applications

Tested Applications:

FC

Species Specificity:

mouse

Background Information

CD24 (known as heat stable antigen) is a small highly glycosylated GPI-linked sialoprotein. It is normally expressed at the surface of most B lymphocytes and differentiating neuroblasts, and it is also up-regulated in a wide variety of cancers. Studies have shown that CD24 functions in the regulation of B-cell apoptosis, leukocyte signal transduction, and leukocyte adhesion.

Storage

Storage:

Store at 2-8°C. Avoid exposure to light. Stable for one year after shipment.

Storage Buffer:

PBS with 0.09% sodium azide.

For technical support and original validation data for this product please contact:

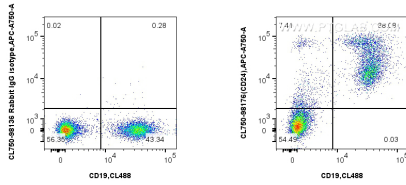
T: 4006900926

E: Proteintech-CN@ptglab.com

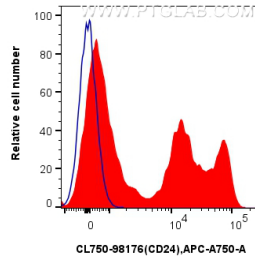
W: ptgcn.com

This product is exclusively available under Proteintech Group brand and is not available to purchase from any other manufacturer.

Selected Validation Data



1x10⁶ mouse splenocytes were surface stained with oraLite® Plus 488 Anti-Mouse CD19 (1D3) (CL488-65290, Clone: 1D3), and 0.25ug CoraLite® Plus 750 Anti-Mouse CD24 Rabbit Recombinant Antibody (CL750-98176, Clone:241691D7) or CoraLite® Plus 750 Rabbit IgG Isotype Control RecAb (CL750-98136, Clone: 240953C9). Cells were not fixed.



1x10⁶ mouse splenocytes were surface stained with 0.25ug CoraLite® Plus 750 Anti-Mouse CD24 Rabbit Recombinant Antibody (CL750-98176, Clone: 241691D7) (red) or CoraLite® Plus 750 Rabbit IgG Isotype Control RecAb (CL750-98136, Clone: 240953C9) (blue). Cells were not fixed.