

For Research Use Only

CoraLite® Plus 750 Anti-Mouse F4/80 Rabbit Recombinant Antibody

Catalog Number:CL750-98236



Basic Information

Catalog Number: CL750-98236	GenBank Accession Number: NM_010130.4	Purification Method: Protein A purification
Concentration: 100ug, 500 µg/ml	GeneID (NCBI): 13733	CloneNo.: 241959G4
Source: Rabbit	UNIPROT ID: Q61549	Excitation/Emission maxima wavelengths: 755 nm / 780 nm
Isotype: IgG	Full Name: EGF-like module containing, mucin-like, hormone receptor-like sequence 1	
	Calculated MW: 102 kDa	

Applications

Tested Applications:
FC
Species Specificity:
mouse

Background Information

Mouse F4/80, also named as EMR1 and Gpf480, is a 160-kDa cell surface glycoprotein which is a member of the EGF TM7 family. The F4/80 molecule is solely expressed on the surface of macrophages and serves as a marker for mature macrophage tissues, including Kupffer cells in liver, splenic red pulp macrophages, brain microglia, gut lamina propria and Langerhans cells in the skin. The function of F4/80 is unclear, but it is speculated to be involved in macrophage adhesion events, cell migration or as a G protein-coupled signaling component of macrophages.

Storage

Storage:
Store at 2-8°C. Avoid exposure to light. Stable for one year after shipment.
Storage Buffer:
PBS with 0.09% sodium azide.

For technical support and original validation data for this product please contact:

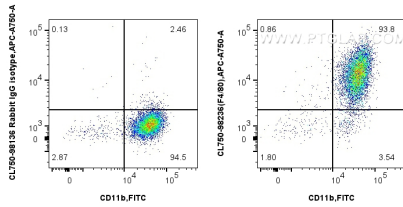
T: 4006900926

E: Proteintech-CN@ptglab.com

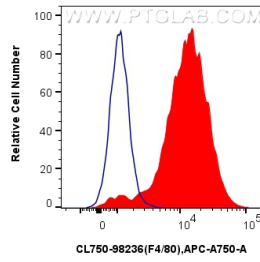
W: ptgcn.com

This product is exclusively available under Proteintech Group brand and is not available to purchase from any other manufacturer.

Selected Validation Data



1x10⁶ mouse peritoneal macrophages were surface stained with FITC Plus Anti-Mouse CD11b, and 0.25 ug CoraLite® Plus 750 Anti-Mouse F4/80 Rabbit RecAb (CL750-98236, Clone: 241959G4) or 0.25 ug CoraLite® Plus 750 Rabbit IgG Isotype Control RecAb (CL750-98136, Clone: 240953C9). Cells were incubated with FC Receptor Block prior to fixing and staining. Cells were not fixed.



1x10⁶ mouse peritoneal macrophages were surface stained with 0.25 ug CoraLite® Plus 750 Anti-Mouse F4/80 Rabbit RecAb (CL750-98236, Clone: 241959G4) (red) or 0.25 ug CoraLite® Plus 750 Rabbit IgG Isotype Control RecAb (CL750-98136, Clone: 240953C9) (blue). Cells were incubated with FC Receptor Block prior to fixing and staining. Cells were not fixed.