

For Research Use Only

# CoraLux Violet 510 Mouse IgG2a Isotype Control (MOPC-173) Recombinant Antibody

Catalog Number: **CLV510-65571**



## Basic Information

Catalog Number:

**CLV510-65571**

Concentration:

**100ug, 500 ug/ml**

Source:

**Mouse**

Isotype:

**IgG2a, kappa**

GenBank Accession Number:

GeneID (NCBI):

Full Name:

Purification Method:

**Protein A purification**

CloneNo.:

**MOPC-173**

Recommended Dilutions:

**FC: 5 ul per 10<sup>6</sup> cells in a 100 µl suspension**

Excitation/Emission maxima wavelengths:

**410 nm / 501 nm**

## Applications

Tested Applications:

**FC**

Species Specificity:

**n/a**

Positive Controls:

**FC : human PBMCs,**

## Background Information

### Storage

Storage:

**Store at 2-8°C. Avoid exposure to light. Stable for one year after shipment.**

Storage Buffer:

**PBS with 0.09% sodium azide, pH7.3**

For technical support and original validation data for this product please contact:

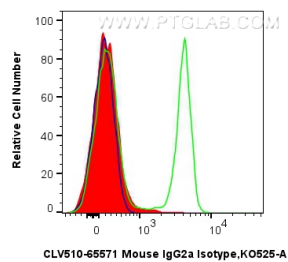
T: 4006900926

E: [Proteintech-CN@ptglab.com](mailto:Proteintech-CN@ptglab.com)

W: [ptgcn.com](http://ptgcn.com)

**This product is exclusively available under Proteintech Group brand and is not available to purchase from any other manufacturer.**

## Selected Validation Data



$1 \times 10^6$  human PBMCs were stained with 0.25  $\mu$ g CoraLux Violet 510 Mouse IgG2a Isotype Control (MOPC-173) RecAb (CLV510-65571, Clone: MOPC-173) (red), or 0.25  $\mu$ g CoraLux Violet 510 Anti-Human CD4 (OKT4) Mouse IgG2a Recombinant Antibody (CLV510-65603, Clone: OKT4) (green), or unstained (blue). Cells were not fixed.