

For Research Use Only

CoraLux Violet 510 Anti-Human CD20 (2H7) Mouse IgG2a Recombinant Antibody

Catalog Number: **CLV510-65575**



Basic Information

Catalog Number:

CLV510-65575

Concentration:

100tests, 5 ul/test

Source:

Mouse

Isotype:

IgG2a

GenBank Accession Number:

BC002807

GeneID (NCBI):

931

UNIPROT ID:

P11836-1

Full Name:

membrane-spanning 4-domains, subfamily A, member 1

Calculated MW:

297 aa, 33 kDa

Purification Method:

Protein A purification

CloneNo.:

2H7

Recommended Dilutions:

FC: 5 ul per 10⁶ cells in a 100 µl suspension

Excitation/Emission maxima wavelengths:

410 nm / 501 nm

Applications

Tested Applications:

FC

Species Specificity:

human, monkey, non-human primates

Positive Controls:

FC : human PBMCs,

Background Information

CD20 is a 33-37 kDa transmembrane phosphoprotein belonging to the membrane-spanning 4A family (PMID: 3260267; 16785532). CD20 is a B-lymphocyte surface molecule that is widely expressed during B-cell ontogeny, from early pre-B-cell developmental stages until final differentiation into plasma cells (PMID: 7524522). CD20 functions as calcium-permeable cation channel (PMID: 7684739). It is involved in the regulation of B-cell activation, proliferation and differentiation (PMID: 7524522).

Storage

Storage:

Store at 2-8°C. Avoid exposure to light. Stable for one year after shipment.

Storage Buffer:

PBS with 0.09% sodium azide and 0.5% BSA, pH7.3

For technical support and original validation data for this product please contact:

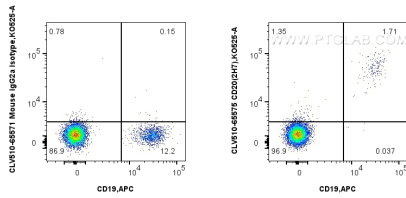
T: 4006900926

E: Proteintech-CN@ptglab.com

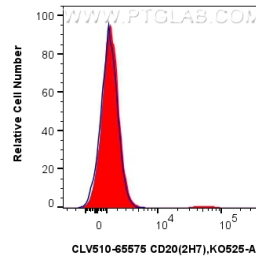
W: ptgcn.com

This product is exclusively available under Proteintech Group brand and is not available to purchase from any other manufacturer.

Selected Validation Data



1x10⁶ human PBMCs were surface stained with FcZero-rAb™ APC Anti-Human CD19, and 5 ul CoraLux Violet 510 Anti-Human CD20 (2H7) Mouse IgG2a RecAb (CLV510-65575, Clone: 2H7) or CoraLux Violet 510 Mouse IgG2a Isotype Control (MOPC-173) Recombinant Antibody (CLV510-65571, Clone: MOPC-173). Cells were not fixed. Lymphocytes were gated.



1x10⁶ human PBMCs were surface stained with 5 ul CoraLux Violet 510 Anti-Human CD20 (2H7) Mouse IgG2a RecAb (CLV510-65575, Clone: 2H7) (red) or CoraLux Violet 510 Mouse IgG2a Isotype Control (MOPC-173) Recombinant Antibody (CLV510-65571, Clone: MOPC-173) (blue). Cells were not fixed. Lymphocytes were gated.