

For Research Use Only

# FcZero-rAb® CoraLux Violet 510 Anti-Human CD19 (4G7) Rabbit Recombinant Antibody

Catalog Number: CLV510-FcA65562



## Basic Information

**Catalog Number:**  
CLV510-FcA65562

**Concentration:**  
100tests, 5 ul/test

**Source:**  
Rabbit

**Isotype:**  
IgG

**GenBank Accession Number:**  
BC006338

**GeneID (NCBI):**  
930

**ENSEMBL Gene ID:**  
ENSG00000177455

**UNIPROT ID:**  
P15391

**Full Name:**  
CD19 molecule

**Calculated MW:**  
556 aa, 61 kDa

**Purification Method:**  
Protein A purification

**CloneNo.:**  
4G7

**Recommended Dilutions:**  
FC: 5 ul per 10<sup>6</sup> cells in a 100 µl suspension

**Excitation/Emission maxima wavelengths:**  
410 nm / 501 nm

## Applications

**Tested Applications:**  
FC

**Species Specificity:**  
human

**Positive Controls:**

FC : human PBMCs,

## Background Information

CD19 is a 95 kDa type I transmembrane glycoprotein belonging to the immunoglobulin superfamily (PMID: 2472450). It is expressed by B cells and follicular dendritic cells. CD19 is up-regulated at the step of B-lineage commitment during the differentiation of the hematopoietic stem cell, it remains on during subsequent stages of differentiation until finally down-regulated during terminal differentiation into plasma cells (PMID: 8528044). CD19 is involved in B cell development, activation and differentiation. It is the dominant component for the signaling complex on B cells that includes CD21 (CR2), CD81 (TAPA-1) and CD225 and acts as a critical co-receptor for BCR signal transduction (PMID: 23210908).

## Storage

**Storage:**

Store at 2-8°C. Avoid exposure to light. Stable for one year after shipment.

**Storage Buffer:**

PBS with 0.09% sodium azide and 0.5% BSA, pH7.3

For technical support and original validation data for this product please contact:

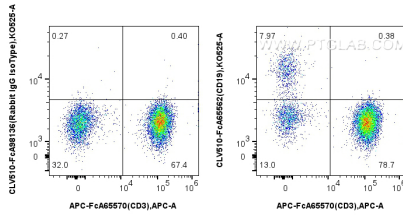
T: 4006900926

E: [Proteintech-CN@ptglab.com](mailto:Proteintech-CN@ptglab.com)

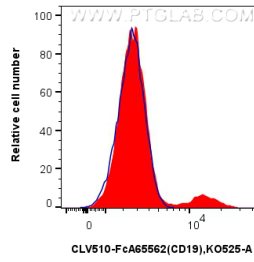
W: [ptgcn.com](http://ptgcn.com)

**This product is exclusively available under Proteintech Group brand and is not available to purchase from any other manufacturer.**

## Selected Validation Data



1x10<sup>6</sup> human PBMCs were surface stained with APC Anti-Human CD3 (UCHT1), and 5 ul CoraLux Violet 510 Anti-Human CD19 (4G7) Rabbit IgG RecAb (CLV510-FcA65562, Clone: 4G7) or Rabbit IgG Isotype Control RecAb (CLV510-FcA98136, Clone: 240953C9). Cells were not fixed. Lymphocytes were gated.



1x10<sup>6</sup> human PBMCs were surface stained with 5 ul CoraLux Violet 510 Anti-Human CD19 (4G7) Rabbit IgG RecAb (CLV510-FcA65562, Clone: 4G7) (red) or Rabbit IgG Isotype Control RecAb (CLV510-FcA98136, Clone: 240953C9) (blue). Cells were not fixed. Lymphocytes were gated.