

For Research Use Only

FcZero-rAb® CoraLux Violet 510 Rabbit IgG Isotype Control Recombinant Antibody



Catalog Number: CLV510-FcA98136

Basic Information

Catalog Number:
CLV510-FcA98136
Concentration:
100ug, 500 ug/ml
Source:
Rabbit
Isotype:
IgG

GenBank Accession Number:
GeneID (NCBI):
Full Name:

Purification Method:
Protein A purification
CloneNo.:
240953C9
Recommended Dilutions:
FC: 0.25 ug per 10⁶ cells in a 100 µl suspension
Excitation/Emission maxima wavelengths:
410 nm / 501 nm

Applications

Tested Applications:
FC
Species Specificity:
n/a

Positive Controls:
FC : human PBMCs,

Background Information

This product is an isotype control antibody, which is used to estimate the non-specific binding of target primary antibodies due to Fc receptor binding or other protein-protein interactions. An isotype control antibody should have the same immunoglobulin type and be used at the same concentration as the test antibody.

Storage

Storage:
Store at 2-8°C. Avoid exposure to light. Stable for one year after shipment.
Storage Buffer:
PBS with 0.09% sodium azide, pH7.3

For technical support and original validation data for this product please contact:

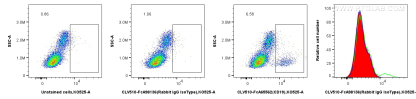
T: 4006900926

E: Proteintech-CN@ptglab.com

W: ptgcn.com

This product is exclusively available under Proteintech Group brand and is not available to purchase from any other manufacturer.

Selected Validation Data



1x10⁶ human PBMCs were surface stained with 0.25 ug CoraLux Violet 510 Rabbit IgG Isotype Control RecAb (CLV510-FcA98136, Clone: 240953C9) (red in histogram), or 0.25 ug CoraLux Violet 510 Anti-Human CD19 (4G7) Rabbit IgG RecAb (CLV510-FcA65562, Clone: 4G7)(green in histogram), or unstained (blue in histogram). Cells were not fixed.