

For Research Use Only

# 11-Keto-beta-boswellic acid



www.ptgcn.com

Catalog Number: CM08367

## 产品信息

**Catalog Number:**  
CM08367

**CAS号:**  
17019-92-0

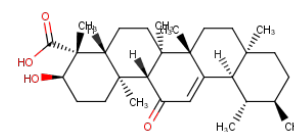
**分子式:**  
C<sub>30</sub>H<sub>46</sub>O<sub>4</sub>

**主要靶点:**  
Leukotriene Receptor|NF-  
κ B|Lipoxygenase

**主要通路:**  
G蛋白偶联受体|NF-κ B信号通路|  
代谢

**分子量:**  
470.68

**溶解度:**  
DMSO:22.5 mg/mL (47.8 mM)



## 体外活性

A total of ten transformed compounds were isolated and purified, and their chemical structures were characterized as 7 $\beta$ -hydroxy-11-keto- $\beta$ -boswellic acid; 7 $\beta$ , 15 $\alpha$   $\pm$ -dihydroxy-11-keto- $\beta$ -boswellic acid; 7 $\beta$ , 16 $\beta$ -dihydroxy-11-keto- $\beta$ -boswellic acid; 7 $\beta$ , 16 $\alpha$   $\pm$ -dihydroxy-11-keto- $\beta$ -boswellic acid; 7 $\beta$ , 22 $\beta$ -dihydroxy-11-keto- $\beta$ -boswellic acid; 7 $\beta$ , 21 $\beta$ -dihydroxy-11-keto- $\beta$ -boswellic acid; 7 $\beta$ , 20 $\beta$ -dihydroxy-11-keto- $\beta$ -boswellic acid; 7 $\beta$ , 30-dihydroxy-11-keto- $\beta$ -boswellic acid; 3 $\alpha$   $\pm$ , 7 $\beta$ -dihydroxy-11-oxours-12-ene-24, 30-dioic acid and 3 $\alpha$   $\pm$ , 7 $\beta$ -dihydroxy-30-(2-hydroxypropanoyloxy)-11-oxours-12-en-24-oic acid by various spectroscopic methods. The biotransformation processes include hydroxylation, oxidation and esterification. Primary structure-activity relationships (SAR) of inhibitory effects on NO production in RAW 264.7 macrophage cells are discussed[1]

## 描述

11-Keto-beta-boswellic acid, a novel Nrf2 activator, and a selective 5-lipoxygenase (5-LOX) inhibitor; it exerts dose dependent cardioprotective effect manifested by dose-dependent reduction in serum lactate dehydrogenase

## 储存

Powder: -20°C for 3 years | In solvent: -80°C for 2 years

For technical support and original validation data for this product please contact

T: 027-87531629

E: Proteintech-CN@ptglab.com

W: ptgcn.com

This product is exclusively available under Proteintech Group brand and is not available to purchase from any other manufacturer.