

For Research Use Only

# Pomalidomide-CH<sub>2</sub>CONH-C<sub>2</sub>-COOH



www.ptgcn.com

Catalog Number: CM08826

## 产品信息

Catalog Number:  
CM08826

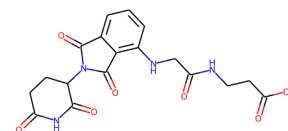
分子量:  
402.36

CAS号:  
T40006

分子式:  
C<sub>18</sub>H<sub>18</sub>N<sub>4</sub>O<sub>7</sub>

主要靶点:  
Others

主要通路:  
其他



## 描述

Pomalidomide-CH<sub>2</sub>CONH-C<sub>2</sub>-COOH is a synthesized E3 ligase ligand-linker conjugate that incorporates the Pomalidomide based CRBN ligand and linker used in PROTAC technology.

## 储存

Powder: -20°C for 3 years | In solvent: -80°C for 2 years

For technical support and original validation data for this product please contact

T: 027-87531629

E: Proteintech-CN@ptglab.com

W: ptgcn.com

This product is exclusively available under Proteintech Group brand and is not available to purchase from any other manufacturer.