

Catalog Number: CM09391

产品信息

Catalog Number:
CM09391

CAS号:
2437547-04-9

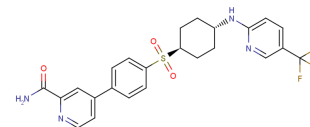
分子式:
C₂₄H₂₃F₃N₄O₃S

主要靶点:
CCR

主要通路:
微生物学|免疫与炎症

分子量:
504.53

溶解度:
DMSO:112.5 mg/mL (223.0 mM)



靶点活性

Monkey CCR6:0.45 nM|Human CCR7:9400 nM|Human CCR6:6 nM

体外活性

CCR6 inhibitor 1 in human CCR6-transfected CHO cells showed a good correlation between Gi signal inhibitory activity and cell migration inhibitory activity, which could effectively inhibit CCR6-dependent cell migration and ERK phosphorylation increase in human primary cells[1].

描述

CCR6 inhibitor 1 is an effective and selective inhibitor of CCR6 (IC₅₀ of monkey and human CCR6 was 0.45 nM and 6 nM, respectively). CCR6 is associated with both autoimmune and non-autoimmune diseases, so CCR6 inhibitor 1 is useful for in vitro and in vivo pathophysiology studies as a small molecule inhibitor of CCR6.

储存

Powder: -20°C for 3 years | In solvent: -80°C for 2 years