

For Research Use Only

# SERCA2a activator 1



www.ptgcn.com

Catalog Number: CM13567

## 产品信息

**Catalog Number:**  
CM13567

**CAS号:**  
2139330-34-8

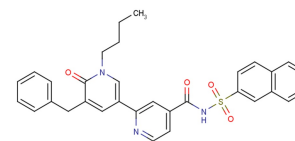
**分子式:**  
C<sub>32</sub>H<sub>29</sub>N<sub>3</sub>O<sub>4</sub>S

**主要靶点:**  
Calcium Channel

**主要通路:**  
离子通道|代谢

**分子量:**  
551.66

**溶解度:**  
DMSO:60 mg/mL (108.76  
mM),ultrasonic and warming and  
heat to 80°C



## 体外活性

SERCA2a activator 1 activates the Ca<sup>2+</sup>-dependent ATPase activity of cardiac sarcoplasmic reticulum vesicles but not that of skeletal muscle SR vesicles that lack phospholamban. SERCA2a activator 1 also increases the Ca<sup>2+</sup> transients and contraction and relaxation of isolated adult rat cardiomyocytes. The surface plasmon resonance assay reveals a direct interaction between SERCA2a activator 1 and PLN, suggesting that the binding of SERCA2a activator 1 to PLN attenuates its inhibition of SERCA2a, resulting in SERCA2a activation [1].

## 体内活性

SERCA2a activator 1 (30mg/kg; intravenous injection; male Wistar rats) treatment obviously increases the diastolic function in anesthetized normal rats [1].

## 描述

SERCA2a activator 1 is a sarco/endoplasmic reticulum Ca<sup>2+</sup>-dependent ATPase 2a activator. SERCA2a activator 1 decreases phospholamban inhibition and enhances the systolic and diastolic functions of the heart.

## 储存

Powder: -20°C for 3 years | In solvent: -80°C for 2 years

For technical support and original validation data for this product please contact

T: 027-87531629

E: Proteintech-CN@ptglab.com

W: ptgcn.com

This product is exclusively available under Proteintech Group brand and is not available to purchase from any other manufacturer.