

For Research Use Only

# PerCP Anti-Mouse CD11b (M1/70)

Catalog Number: CP-65055



## Basic Information

<b>Catalog Number:</b> CP-65055	<b>GenBank Accession Number:</b> BC156991	<b>Purification Method:</b> Affinity purification
<b>Size:</b> 100ug, 100 µg/ml	<b>GeneID (NCBI):</b> 16409	<b>CloneNo.:</b> M1/70
<b>Source:</b> Rat	<b>UNIPROT ID:</b> E9Q604	<b>Excitation/Emission maxima wavelengths:</b> 482 nm / 677 nm
<b>Isotype:</b> IgG2b, kappa	<b>Full Name:</b> integrin alpha M	

## Applications

**Tested Applications:**  
FC

**Species Specificity:**  
Mouse

## Background Information

Integrins are cell adhesion receptors that are heterodimers composed of non-covalently associated  $\alpha$  and  $\beta$  subunits (PMID: 9779984). CD11b, also known as Integrin alpha M or CR3A, belongs to the integrin alpha chain family. CD11b forms an  $\alpha / \beta$  heterodimer with CD18 (integrin  $\beta$  2). CD11b/CD18 is implicated in various adhesive interactions of monocytes, macrophages and granulocytes as well as in mediating the uptake of complement-coated particles and pathogens (PMID: 9558116; 20008295). CD11b/CD18 is a receptor for the complement protein fragment iC3b, and is also a receptor for fibrinogen, factor X and ICAM1 (PMID: 2971974; 15485828).

## Storage

**Storage:**  
Store at 2-8°C. Avoid exposure to light. Stable for one year after shipment.

**Storage Buffer:**  
PBS with 0.09% sodium azide.

For technical support and original validation data for this product please contact:

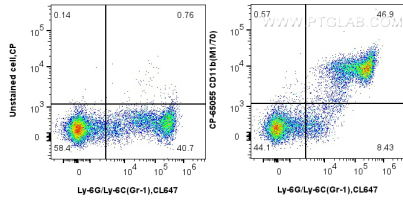
T: 4006900926

E: [Proteintech-CN@ptglab.com](mailto:Proteintech-CN@ptglab.com)

W: [ptgcn.com](http://ptgcn.com)

**This product is exclusively available under Proteintech Group brand and is not available to purchase from any other manufacturer.**

## Selected Validation Data



1x10<sup>6</sup> mouse bone marrow cells were surface stained with 0.25 ug PerCP Anti-Mouse CD11b (M1/70) (CP-65055, Clone: M1/70) or unstained. Cells were then stained with 0.25 ug CoraLite® Plus 647 Anti-Mouse Ly-6G/Ly-6C (Gr-1) (RB6-8C5) (CL647-65140, Clone: RB6-8C5). Cells were not fixed.